

Human IgM Rabbit mAb

Catalog No: #59261

Package Size: #59261-1 50ul #59261-2 100ul

Orders: order@signalwayantibody.com

Support: tech@signalwayantibody.com

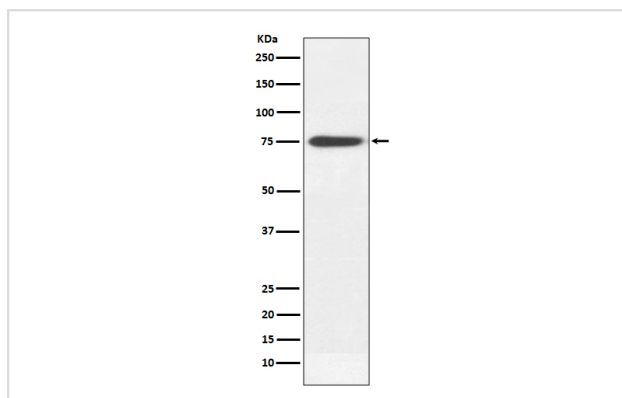
Description

Product Name	Human IgM Rabbit mAb
Host Species	Rabbit
Clonality	Monoclonal
Isotype	Rabbit IgG
Purification	Affinity-chromatography
Applications	WB IHC IP
Species Reactivity	Human
Specificity	Human IgM Antibody detects endogenous levels of total Human IgM
Immunogen Description	A synthesized peptide derived from human Human IgM
Other Names	IGHM; Immunoglobulin mu;
Accession No.	Uniprot:P01871
Uniprot	P01871
Formulation	Rabbit IgG in phosphate buffered saline , pH 7.4, 150mM NaCl, 0.02% sodium azide and 50% glycerol.
Storage	Store at +4°C short term. Store at -20°C long term. Avoid freeze / thaw cycle.

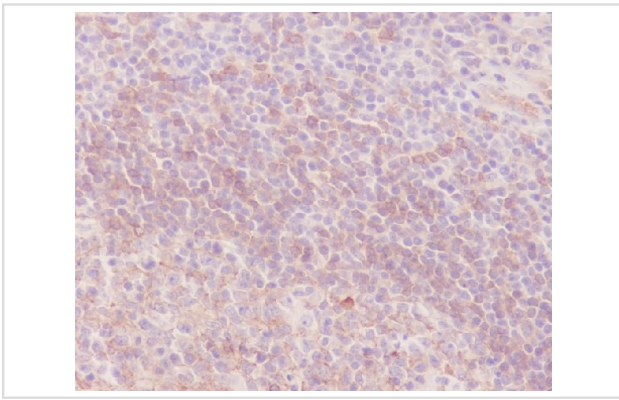
Application Details

WB 1:500~1:2000 IHC 1:50~1:200 IP 1:50

Images



Western blot analysis of Human IgM expression in human plasma lysate.



Immunohistochemical analysis of paraffin-embedded Human tonsil, using Human IgM Antibody.

Product Description

IgM measurement yields information about the body's immediate resistance and response to infection as well as information related to specific diseases. Decreased levels are associated with immune deficiency states, hereditary deficiencies, and myeloma. Increased levels can be associated with Waldenstrom's macroglobulinemia, chronic infection and hepatocellular disease.

Background

IgM measurement yields information about the body's immediate resistance and response to infection as well as information related to specific diseases. Decreased levels are associated with immune deficiency states, hereditary deficiencies, and myeloma. Increased levels can be associated with Waldenstrom's macroglobulinemia, chronic infection and hepatocellular disease.

Note: This product is for in vitro research use only