

## Neutrophil Elastase Rabbit mAb

Catalog No: #59263

Package Size: #59263-1 50ul #59263-2 100ul

Orders: order@signalwayantibody.com

Support: tech@signalwayantibody.com

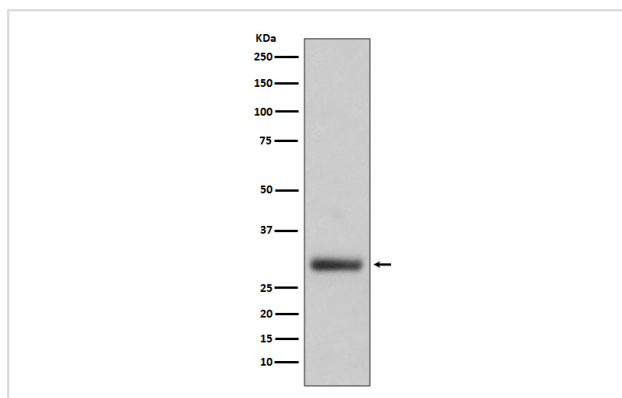
## Description

Product Name	Neutrophil Elastase Rabbit mAb
Host Species	Rabbit
Clonality	Monoclonal
Isotype	Rabbit IgG
Purification	Affinity-chromatography
Applications	WB IHC ICC/IF FC
Species Reactivity	Human
Specificity	Neutrophil Elastase Antibody detects endogenous levels of total Neutrophil Elastase
Immunogen Description	A synthesized peptide derived from human Neutrophil Elastase
Other Names	ELA2; ELANE; Elastase 2; Medullasin; Neutrophil elastase; PMN E; SCN1;
Accession No.	Uniprot:P08246
Uniprot	P08246
Formulation	Rabbit IgG in phosphate buffered saline , pH 7.4, 150mM NaCl, 0.02% sodium azide and 50% glycerol.
Storage	Store at +4°C short term. Store at -20°C long term. Avoid freeze / thaw cycle.

## Application Details

WB 1:500~1:2000 IHC 1:100~1:500 ICC/IF 1:50~1:200 FC 1:30

## Images



Western blot analysis of Neutrophil Elastase expression in HL60 cell lysate.

## Product Description

Modifies the functions of natural killer cells, monocytes and granulocytes. Inhibits C5a-dependent neutrophil enzyme release and chemotaxis.

## Background

Modifies the functions of natural killer cells, monocytes and granulocytes. Inhibits C5a-dependent neutrophil enzyme release and chemotaxis.

---

Note: This product is for in vitro research use only