

S100A10 Rabbit mAb

Catalog No: #59264

Package Size: #59264-1 50ul #59264-2 100ul

Orders: order@signalwayantibody.com

Support: tech@signalwayantibody.com

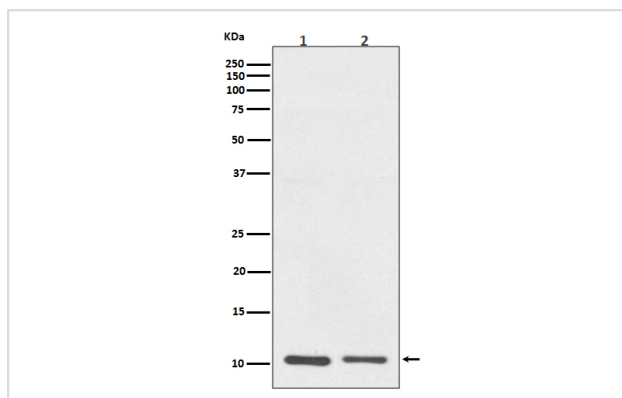
Description

Product Name	S100A10 Rabbit mAb
Host Species	Rabbit
Clonality	Monoclonal
Isotype	Rabbit IgG
Purification	Affinity-chromatography
Applications	WB IHC
Species Reactivity	Human Mouse
Specificity	S100A10 Antibody detects endogenous levels of total S100A10
Immunogen Description	A synthesized peptide derived from human S100A10
Other Names	Protein S100-A10; Calpactin I light chain; Calpactin-1 light chain; S100A10; ANX2LG; CAL1L; CLP11;
Accession No.	Uniprot:P60903
Uniprot	P60903
Formulation	Rabbit IgG in phosphate buffered saline , pH 7.4, 150mM NaCl, 0.02% sodium azide and 50% glycerol.
Storage	Store at +4°C short term. Store at -20°C long term. Avoid freeze / thaw cycle.

Application Details

WB 1:500~1:2000 IHC 1:100~1:500

Images



Western blot analysis of S100A10 expression in (1) A431 cell lysate; (2) RAW264.7 cell lysate.

Product Description

S100A10 acts as a cellular chaperone for hepatitis B (Hep B) virus polymerase. Hep B virus polymerase normally localizes to the cytoplasm only, though in the presence of S-100A10 a portion relocates to the nucleus, implying a role for S100A10 and intracellular calcium in the process of viral replication.

Background

S100A10 acts as a cellular chaperone for hepatitis B (Hep B) virus polymerase. Hep B virus polymerase normally localizes to the cytoplasm only, though in the presence of S-100A10 a portion relocates to the nucleus, implying a role for S100A10 and intracellular calcium in the process of viral replication.

Note: This product is for in vitro research use only