

## Ctip2 Rabbit mAb

Catalog No: #59267

Package Size: #59267-1 50ul #59267-2 100ul

Orders: order@signalwayantibody.com

Support: tech@signalwayantibody.com

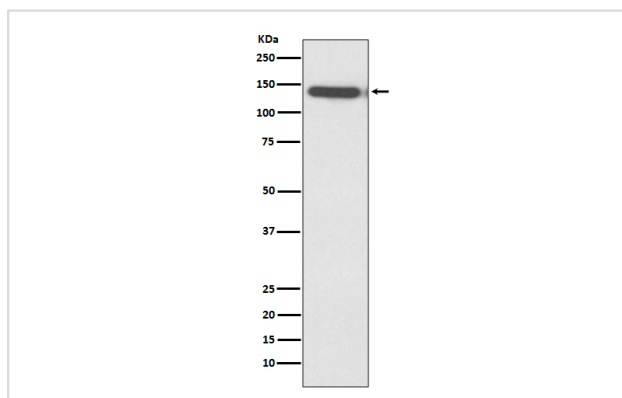
## Description

Product Name	Ctip2 Rabbit mAb
Host Species	Rabbit
Clonality	Monoclonal
Isotype	Rabbit IgG
Purification	Affinity-chromatography
Applications	WB
Species Reactivity	Human
Specificity	Ctip2 Antibody detects endogenous levels of total Ctip2
Immunogen Description	A synthesized peptide derived from human Ctip2
Other Names	ATL1 alpha; ATL1 beta; ATL1 gamma; ATL1 delta; Bcl11b; BCL11B/TRDC fusion; CTIP2; hRIT1 alpha; hRit1; Rit1;
Accession No.	Uniprot:Q9C0K0
Uniprot	Q9C0K0
Formulation	Rabbit IgG in phosphate buffered saline , pH 7.4, 150mM NaCl, 0.02% sodium azide and 50% glycerol.
Storage	Store at +4°C short term. Store at -20°C long term. Avoid freeze / thaw cycle.

## Application Details

WB 1:500~1:2000

## Images



Western blot analysis of Ctip2 expression in Jurkat cell lysate.

## Product Description

Tumor-suppressor protein involved in T-cell lymphomas. May function on the P53-signaling pathway. May be a key regulator of both differentiation and survival during thymocyte development. Repress transcription through direct, TFCOUP2-independent binding to a GC-rich response element.

## Background

---

Tumor-suppressor protein involved in T-cell lymphomas. May function on the P53-signaling pathway. May be a key regulator of both differentiation and survival during thymocyte development. Repress transcription through direct, TFCOUP2-independent binding to a GC-rich response element.

---

Note: This product is for in vitro research use only