

Laminin beta 1 Rabbit mAb

Catalog No: #59270

Package Size: #59270-1 50ul #59270-2 100ul

Orders: order@signalwayantibody.com

Support: tech@signalwayantibody.com

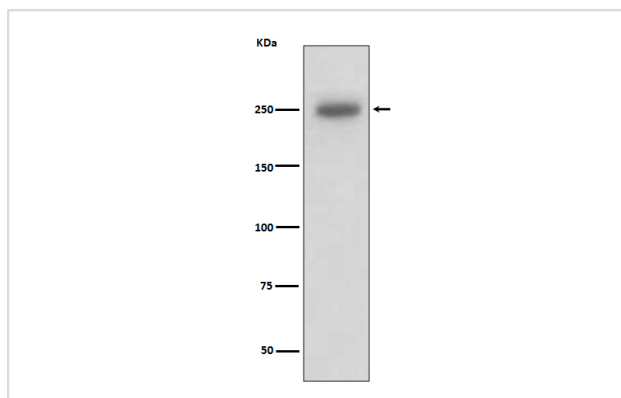
Description

Product Name	Laminin beta 1 Rabbit mAb
Host Species	Rabbit
Clonality	Monoclonal
Isotype	Rabbit IgG
Purification	Affinity-chromatography
Applications	WB FC
Species Reactivity	Human Mouse Rat
Specificity	Laminin beta 1 Antibody detects endogenous levels of total Laminin beta 1
Immunogen Description	A synthesized peptide derived from human Laminin beta 1
Other Names	CLM; LAMB1; Laminin B1; Laminin beta 1 chain;
Accession No.	Uniprot:P07942
Uniprot	P07942
Formulation	Rabbit IgG in phosphate buffered saline , pH 7.4, 150mM NaCl, 0.02% sodium azide and 50% glycerol.
Storage	Store at +4°C short term. Store at -20°C long term. Avoid freeze / thaw cycle.

Application Details

WB 1:500~1:2000 FC 1:50

Images



Western blot analysis of Laminin beta 1 expression in A431 cell lysate.

Product Description

Binding to cells via a high affinity receptor, laminin is thought to mediate the attachment, migration and organization of cells into tissues during embryonic development by interacting with other extracellular matrix components.

Background

Binding to cells via a high affinity receptor, laminin is thought to mediate the attachment, migration and organization of cells into tissues during embryonic development by interacting with other extracellular matrix components.

Note: This product is for in vitro research use only