

58K Golgi protein Rabbit mAb

Catalog No: #59272

Package Size: #59272-1 50ul #59272-2 100ul

Orders: order@signalwayantibody.com

Support: tech@signalwayantibody.com

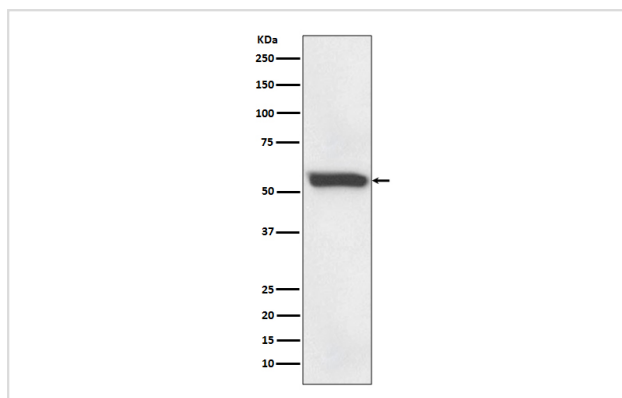
Description

Product Name	58K Golgi protein Rabbit mAb
Host Species	Rabbit
Clonality	Monoclonal
Isotype	Rabbit IgG
Purification	Affinity-chromatography
Applications	WB IHC FC
Species Reactivity	Human
Specificity	58K Golgi protein Antibody detects endogenous levels of total 58K Golgi protein
Immunogen Description	A synthesized peptide derived from human 58K Golgi protein
Other Names	Formimidoyltetrahydrofolate cyclodeaminase; FTCD; Glutamate formiminotransferase; LCHC 1;
Accession No.	Uniprot:O95954
Uniprot	O95954
Formulation	Rabbit IgG in phosphate buffered saline , pH 7.4, 150mM NaCl, 0.02% sodium azide and 50% glycerol.
Storage	Store at +4°C short term. Store at -20°C long term. Avoid freeze / thaw cycle.

Application Details

WB 1:500~1:2000 IHC 1:50~1:200 FC 1:100

Images



Western blot analysis of 58K Golgi protein expression in human fetal liver lysate.

Product Description

Folate-dependent enzyme, that displays both transferase and deaminase activity. Serves to channel one-carbon units from formiminoglutamate to the folate pool. Binds and promotes bundling of vimentin filaments originating from the Golgi.

Background

Folate-dependent enzyme, that displays both transferase and deaminase activity. Serves to channel one-carbon units from formiminoglutamate to the folate pool. Binds and promotes bundling of vimentin filaments originating from the Golgi.

Note: This product is for in vitro research use only