

## PDHA1 Rabbit mAb

Catalog No: #59273

Package Size: #59273-1 50ul #59273-2 100ul

Orders: order@signalwayantibody.com

Support: tech@signalwayantibody.com

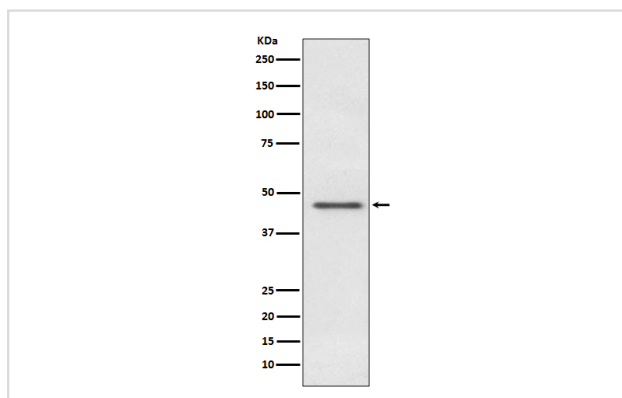
## Description

Product Name	PDHA1 Rabbit mAb
Host Species	Rabbit
Clonality	Monoclonal
Isotype	Rabbit IgG
Purification	Affinity-chromatography
Applications	WB IHC ICC/IF IP FC
Species Reactivity	Human Mouse Rat
Specificity	PDHA1 Antibody detects endogenous levels of total PDHA1
Immunogen Description	A synthesized peptide derived from human PDHA1
Other Names	Pyruvate dehydrogenase E1 component subunit alpha, somatic form; mitochondrial; PDHE1-A type I; PDHA1; PHE1A;
Accession No.	Uniprot:P08559
Uniprot	P08559
Formulation	Rabbit IgG in phosphate buffered saline , pH 7.4, 150mM NaCl, 0.02% sodium azide and 50% glycerol.
Storage	Store at +4°C short term. Store at -20°C long term. Avoid freeze / thaw cycle.

## Application Details

WB 1:500~1:2000 IHC 1:50~1:200 ICC/IF 1:50~1:200 IP 1:50 FC 1:50

## Images



Western blot analysis of PDHA1 expression in HeLa cell lysate.

## Product Description

The PDH complex is composed of multiple copies of three enzymatic components: pyruvate dehydrogenase (E1), dihydrolipoamide acetyltransferase (E2) and lipoamide dehydrogenase (E3). Catalyzes the removal of CO<sub>2</sub> from pyruvate. Mutations in the  $\alpha$  subunits of pyruvate dehydrogenase (E1) lead to congenital defects that are usually associated with lactic acidosis, neurodegeneration and early death.

## Background

---

The PDH complex is composed of multiple copies of three enzymatic components: pyruvate dehydrogenase (E1), dihydrolipoamide acetyltransferase (E2) and lipoamide dehydrogenase (E3). Catalyzes the removal of CO<sub>2</sub> from pyruvate. Mutations in the  $\alpha$  subunits of pyruvate dehydrogenase (E1) lead to congenital defects that are usually associated with lactic acidosis, neurodegeneration and early death.

---

Note: This product is for in vitro research use only