

SERPINA1 Rabbit mAb

Catalog No: #59280

Package Size: #59280-1 50ul #59280-2 100ul

Orders: order@signalwayantibody.com

Support: tech@signalwayantibody.com

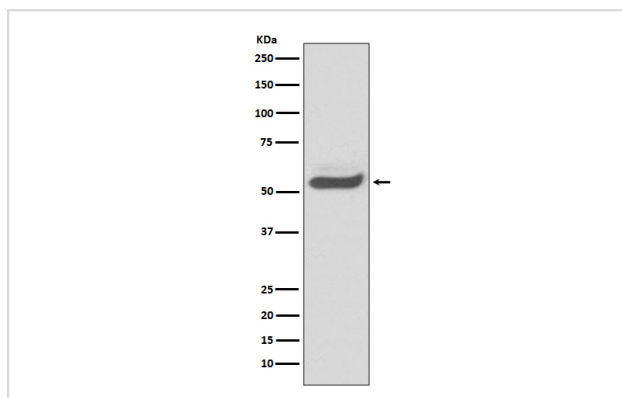
Description

Product Name	SERPINA1 Rabbit mAb
Host Species	Rabbit
Clonality	Monoclonal
Isotype	Rabbit IgG
Purification	Affinity-chromatography
Applications	WB IHC ICC/IF IP
Species Reactivity	Human
Specificity	SERPINA1 Antibody detects endogenous levels of total SERPINA1
Immunogen Description	A synthesized peptide derived from human SERPINA1
Other Names	Serpin A1; Short peptide from AAT; SPAAT; AAT;
Accession No.	Uniprot:P01009
Uniprot	P01009
Formulation	Rabbit IgG in phosphate buffered saline , pH 7.4, 150mM NaCl, 0.02% sodium azide and 50% glycerol.
Storage	Store at +4°C short term. Store at -20°C long term. Avoid freeze / thaw cycle.

Application Details

WB 1:500~1:2000 IHC 1:50~1:200 ICC/IF 1:50~1:200 IP 1:30

Images



Western blot analysis of SERPINA1 expression in human fetal kidney lysate.

Product Description

SERPINA1 is secreted and is a serine protease inhibitor which its targets include elastase, plasmin, collagenase, thrombin, leucocytic proteases, trypsin, chymotrypsin, and plasminogen activator. Inhibitor of serine proteases. Its primary target is elastase, but it also has a moderate affinity for plasmin and thrombin.

Background

SERPINA1 is secreted and is a serine protease inhibitor which its targets include elastase, plasmin, collagenase, thrombin, leucocytic proteases, trypsin, chymotrypsin, and plasminogen activator. Inhibitor of serine proteases. Its primary target is elastase, but it also has a moderate affinity for plasmin and thrombin.

Note: This product is for in vitro research use only