

HE4 Rabbit mAb

Catalog No: #59281

Package Size: #59281-1 50ul #59281-2 100ul

Orders: order@signalwayantibody.com

Support: tech@signalwayantibody.com

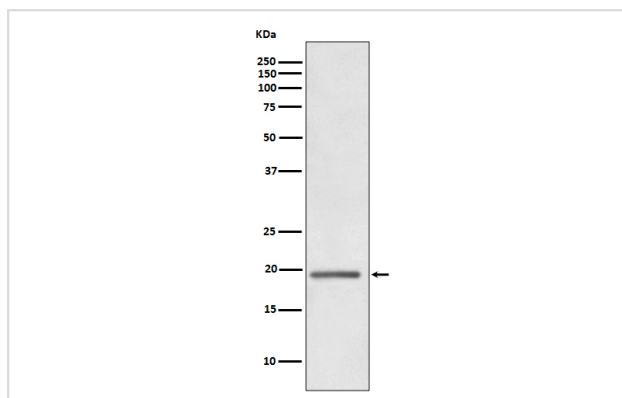
Description

Product Name	HE4 Rabbit mAb
Host Species	Rabbit
Clonality	Monoclonal
Isotype	Rabbit IgG
Purification	Affinity-chromatography
Applications	WB IHC ICC/IF IP
Species Reactivity	Human
Specificity	HE4 Antibody detects endogenous levels of total HE4
Immunogen Description	A synthesized peptide derived from human HE4
Other Names	WFDC2; HE4; WAP5;
Accession No.	Uniprot:Q14508
Uniprot	Q14508
Formulation	Rabbit IgG in phosphate buffered saline , pH 7.4, 150mM NaCl, 0.02% sodium azide and 50% glycerol.
Storage	Store at +4°C short term. Store at -20°C long term. Avoid freeze / thaw cycle.

Application Details

WB 1:500~1:2000 IHC 1:50~1:200 ICC/IF 1:50~1:200 IP 1:50

Images



Western blot analysis of HE4 expression in human ovary cancer whole cell lysate.

Product Description

HE4 is a small secretory protein that may influence sperm maturation. Initially described as being exclusively transcribed in the epididymis.

Background

HE4 is a small secretory protein that may influence sperm maturation. Initially described as being exclusively transcribed in the epididymis.

Note: This product is for in vitro research use only