

CD80 Rabbit mAb

Catalog No: #59282

Package Size: #59282-1 50ul #59282-2 100ul

Orders: order@signalwayantibody.com

Support: tech@signalwayantibody.com

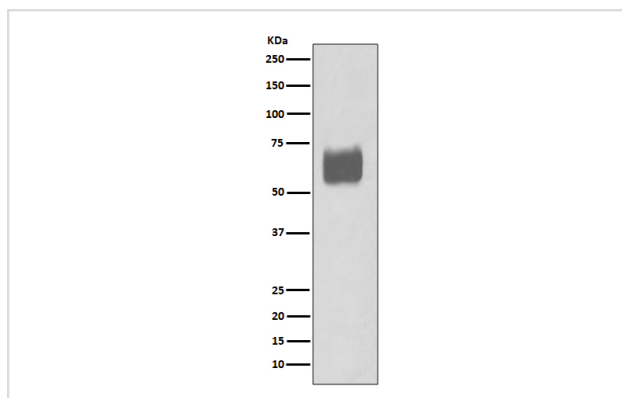
Description

| | |
|-----------------------|--|
| Product Name | CD80 Rabbit mAb |
| Host Species | Rabbit |
| Clonality | Monoclonal |
| Isotype | Rabbit IgG |
| Purification | Affinity-chromatography |
| Applications | WB IHC |
| Species Reactivity | Human |
| Specificity | CD80 Antibody detects endogenous levels of total CD80 |
| Immunogen Description | A synthesized peptide derived from human CD80 |
| Other Names | B7.1; BB1; CD28 antigen ligand 1; CD28LG1; CD80; CD80 antigen; T-lymphocyte activation antigen CD80; |
| Accession No. | Uniprot:P33681 |
| Uniprot | P33681 |
| Formulation | Rabbit IgG in phosphate buffered saline , pH 7.4, 150mM NaCl, 0.02% sodium azide and 50% glycerol. |
| Storage | Store at +4°C short term. Store at -20°C long term. Avoid freeze / thaw cycle. |

Application Details

WB 1:500~1:2000 IHC 1:50~1:200

Images



Western blot analysis of CD80 expression in Raji cell lysate.

Product Description

Expressed on activated B-cells, macrophages and dendritic cells. Involved in the costimulatory signal essential for T-lymphocyte activation. T-cell proliferation and cytokine production is induced by the binding of CD28 or CTLA-4 to this receptor.

Background

Expressed on activated B-cells, macrophages and dendritic cells. Involved in the costimulatory signal essential for T-lymphocyte activation. T-cell proliferation and cytokine production is induced by the binding of CD28 or CTLA-4 to this receptor.

Note: This product is for in vitro research use only