

CD19 Rabbit mAb

Catalog No: #59284

Package Size: #59284-1 50ul #59284-2 100ul

Orders: order@signalwayantibody.com

Support: tech@signalwayantibody.com

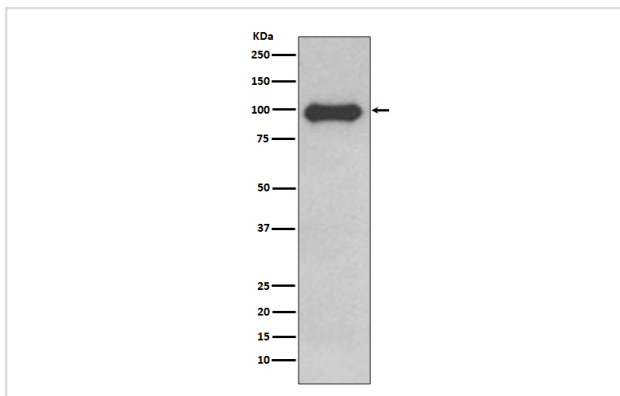
Description

Product Name	CD19 Rabbit mAb
Host Species	Rabbit
Clonality	Monoclonal
Isotype	Rabbit IgG
Purification	Affinity-chromatography
Applications	WB IHC ICC/IF
Species Reactivity	Human
Specificity	CD19 Antibody detects endogenous levels of total CD19
Immunogen Description	A synthesized peptide derived from human CD19
Other Names	B-lymphocyte antigen CD19; B-lymphocyte surface antigen B4;
Accession No.	Uniprot:P15391
Uniprot	P15391
Formulation	Rabbit IgG in phosphate buffered saline , pH 7.4, 150mM NaCl, 0.02% sodium azide and 50% glycerol.
Storage	Store at +4°C short term. Store at -20°C long term. Avoid freeze / thaw cycle.

Application Details

WB 1:500~1:2000 IHC 1:50~1:200 ICC/IF 1:50~1:200

Images



Western blot analysis of CD19 expression in Ramos cell lysate.

Product Description

CD19 is a transmembrane glycoprotein that contains two extracellular immunoglobulin-like domains. Assembles with the antigen receptor of B lymphocytes in order to decrease the threshold for antigen receptor-dependent stimulation.

Background

CD19 is a transmembrane glycoprotein that contains two extracellular immunoglobulin-like domains. Assembles with the antigen receptor of B lymphocytes in order to decrease the threshold for antigen receptor-dependent stimulation.

Note: This product is for in vitro research use only