

CD90 Rabbit mAb

Catalog No: #59287

Package Size: #59287-1 50ul #59287-2 100ul

Orders: order@signalwayantibody.com

Support: tech@signalwayantibody.com

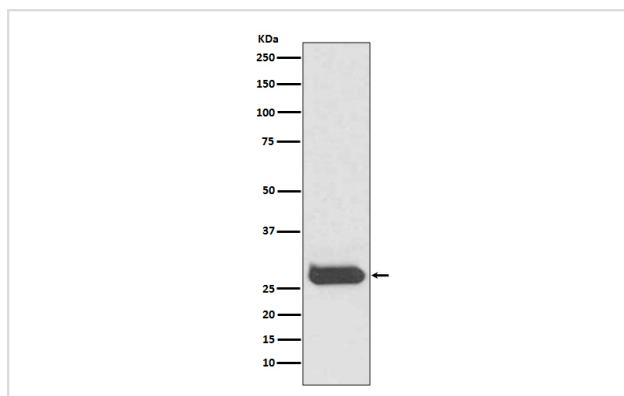
Description

Product Name	CD90 Rabbit mAb
Host Species	Rabbit
Clonality	Monoclonal
Isotype	Rabbit IgG
Purification	Affinity-chromatography
Applications	WB IHC ICC/IF
Species Reactivity	Human
Specificity	CD90 Antibody detects endogenous levels of total CD90
Immunogen Description	A synthesized peptide derived from human CD90
Other Names	Thy-1 membrane glycoprotein; Thy-1 antigen; CDw90; CD90; THY1;
Accession No.	Uniprot:P04216
Uniprot	P04216
Formulation	Rabbit IgG in phosphate buffered saline , pH 7.4, 150mM NaCl, 0.02% sodium azide and 50% glycerol.
Storage	Store at +4°C short term. Store at -20°C long term. Avoid freeze / thaw cycle.

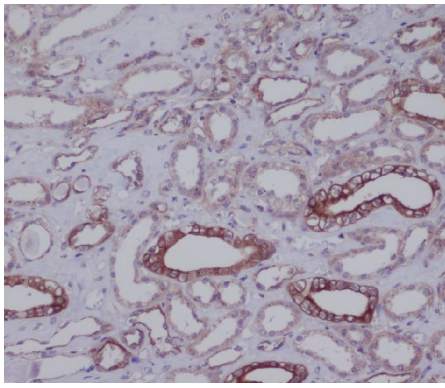
Application Details

WB 1:500~1:2000 IHC 1:50~1:200 ICC/IF 1:50~1:200

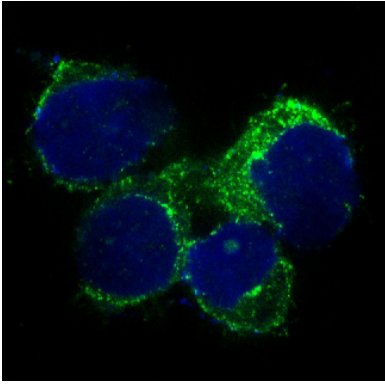
Images



Western blot analysis of CD90 expression in human fetal brain lysate.



Immunohistochemical analysis of paraffin-embedded human kidney, using CD90 Antibody.



Immunofluorescent analysis of U87-MG cells, using CD90 Antibody.

Product Description

The Thy1 cell surface antigen is a GPI-anchored, developmentally regulated protein involved in signaling cascades that mediate neurite outgrowth, T cell activation, tumor suppression, apoptosis, and fibrosis. May play a role in cell-cell or cell-ligand interactions during synaptogenesis and other events in the brain.

Background

The Thy1 cell surface antigen is a GPI-anchored, developmentally regulated protein involved in signaling cascades that mediate neurite outgrowth, T cell activation, tumor suppression, apoptosis, and fibrosis. May play a role in cell-cell or cell-ligand interactions during synaptogenesis and other events in the brain.

Note: This product is for in vitro research use only