

## Dystrophin Rabbit mAb

Catalog No: #59300

Package Size: #59300-1 50ul #59300-2 100ul

Orders: order@signalwayantibody.com

Support: tech@signalwayantibody.com

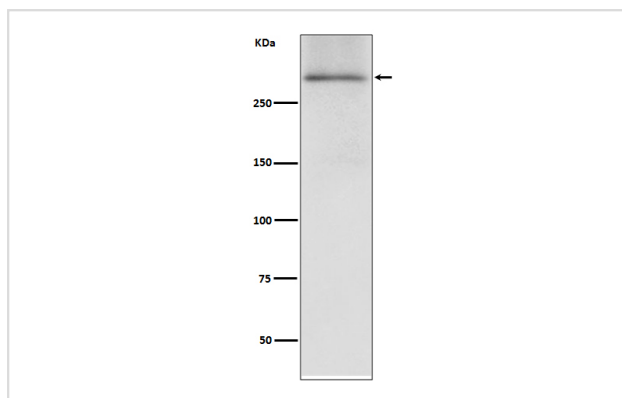
## Description

Product Name	Dystrophin Rabbit mAb
Host Species	Rabbit
Clonality	Monoclonal
Isotype	Rabbit IgG
Purification	Affinity-chromatography
Applications	WB
Species Reactivity	Human Mouse Rat
Specificity	Dystrophin Antibody detects endogenous levels of total Dystrophin
Immunogen Description	A synthesized peptide derived from human Dystrophin
Other Names	BMD; CMD3B; DMD; Dystrophin;
Accession No.	Uniprot:P11532
Uniprot	P11532
Formulation	Rabbit IgG in phosphate buffered saline , pH 7.4, 150mM NaCl, 0.02% sodium azide and 50% glycerol.
Storage	Store at +4°C short term. Store at -20°C long term. Avoid freeze / thaw cycle.

## Application Details

WB 1:500~1:2000

## Images



Western blot analysis of Dystrophin expression in human fetal heart lysate.

## Product Description

Anchors the extracellular matrix to the cytoskeleton via F-actin. Ligand for dystroglycan. Component of the dystrophin-associated glycoprotein complex which accumulates at the neuromuscular junction (NMJ) and at a variety of synapses in the peripheral and central nervous systems and has a structural function in stabilizing the sarcolemma. Also implicated in signaling events and synaptic transmission.

## Background

---

Anchors the extracellular matrix to the cytoskeleton via F-actin. Ligand for dystroglycan. Component of the dystrophin-associated glycoprotein complex which accumulates at the neuromuscular junction (NMJ) and at a variety of synapses in the peripheral and central nervous systems and has a structural function in stabilizing the sarcolemma. Also implicated in signaling events and synaptic transmission.

---

Note: This product is for in vitro research use only