

## BMP2 Rabbit mAb

Catalog No: #59306

Package Size: #59306-1 50ul #59306-2 100ul

Orders: [order@signalwayantibody.com](mailto:order@signalwayantibody.com)Support: [tech@signalwayantibody.com](mailto:tech@signalwayantibody.com)

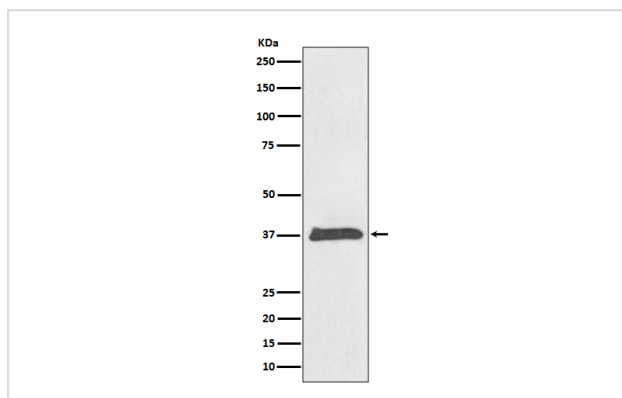
## Description

Product Name	BMP2 Rabbit mAb
Host Species	Rabbit
Clonality	Monoclonal
Isotype	Rabbit IgG
Purification	Affinity-chromatography
Applications	WB
Species Reactivity	Human
Specificity	BMP2 Antibody detects endogenous levels of total BMP2
Immunogen Description	A synthesized peptide derived from human BMP2
Other Names	BDA2; BMP-2A; Bmp2; BMP2A; Bone morphogenetic protein 2A;
Accession No.	Uniprot:P12643
Uniprot	P12643
Formulation	Rabbit IgG in phosphate buffered saline , pH 7.4, 150mM NaCl, 0.02% sodium azide and 50% glycerol.
Storage	Store at +4°C short term. Store at -20°C long term. Avoid freeze / thaw cycle.

## Application Details

WB 1:500~1:2000

## Images



Western blot analysis of BMP2 expression in HeLa cell lysate.

## Product Description

Bone morphogenetic proteins (BMPs) are members of the TGF $\beta$  superfamily. BMPs are involved in the induction of cartilage and bone formation. Induces cartilage and bone formation.

## Background

---

Bone morphogenic proteins (BMPs) are members of the TGF $\beta$  superfamily. BMPs are involved in the induction of cartilage and bone formation. Induces cartilage and bone formation.

---

Note: This product is for in vitro research use only