

C3 Rabbit mAb

Catalog No: #59307

Package Size: #59307-1 50ul #59307-2 100ul

Orders: order@signalwayantibody.com

Support: tech@signalwayantibody.com

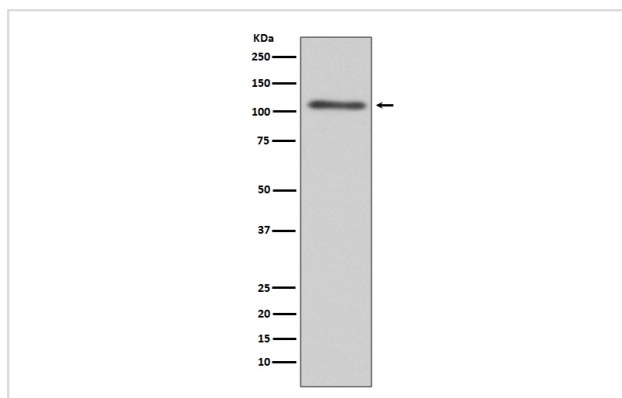
Description

Product Name	C3 Rabbit mAb
Host Species	Rabbit
Clonality	Monoclonal
Isotype	Rabbit IgG
Purification	Affinity-chromatography
Applications	WB ICC/IF FC
Species Reactivity	Human
Specificity	C3 Antibody detects endogenous levels of total C3
Immunogen Description	A synthesized peptide derived from human C3
Other Names	AHUS5; ARMD9; ASP; Complement C3; Complement factor 3; CPAMD1; HEL S 62p;
Accession No.	Uniprot:P01024
Uniprot	P01024
Formulation	Rabbit IgG in phosphate buffered saline , pH 7.4, 150mM NaCl, 0.02% sodium azide and 50% glycerol.
Storage	Store at +4°C short term. Store at -20°C long term. Avoid freeze / thaw cycle.

Application Details

WB 1:500~1:2000 ICC/IF 1:50~1:200 FC 1:20

Images



Western blot analysis of C3 expression in HepG2 cell lysate.

Product Description

Plays a central role in the activation of the complement system. Its processing by C3 convertase is the central reaction in both classical and alternative complement pathways. After activation C3b can bind covalently, via its reactive thioester, to cell surface carbohydrates or immune aggregates.

Background

Plays a central role in the activation of the complement system. Its processing by C3 convertase is the central reaction in both classical and alternative complement pathways. After activation C3b can bind covalently, via its reactive thioester, to cell surface carbohydrates or immune aggregates.

Note: This product is for in vitro research use only