

CEA(CD66e) Rabbit mAb

Catalog No: #59317

Package Size: #59317-1 50ul #59317-2 100ul

Orders: order@signalwayantibody.comSupport: tech@signalwayantibody.com

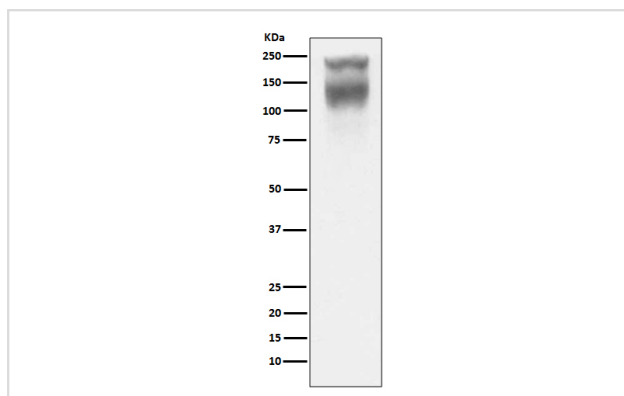
Description

Product Name	CEA(CD66e) Rabbit mAb
Host Species	Rabbit
Clonality	Monoclonal
Isotype	Rabbit IgG
Purification	Affinity-chromatography
Applications	WB IHC ICC/IF
Species Reactivity	Human
Specificity	CEA(CD66e) Antibody detects endogenous levels of total CEA(CD66e)
Immunogen Description	A synthesized peptide derived from human CEA(CD66e)
Other Names	adhesion molecule 5; CD66e; Ceacam5; Meconium antigen 100;
Accession No.	Uniprot:P06731
Uniprot	P06731
Formulation	Rabbit IgG in phosphate buffered saline , pH 7.4, 150mM NaCl, 0.02% sodium azide and 50% glycerol.
Storage	Store at +4°C short term. Store at -20°C long term. Avoid freeze / thaw cycle.

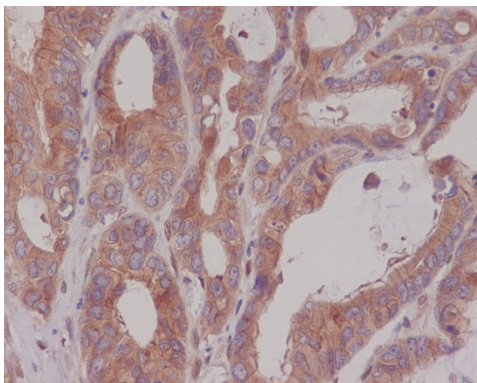
Application Details

WB 1:500~1:2000 IHC 1:50~1:200 ICC/IF 1:50~1:200

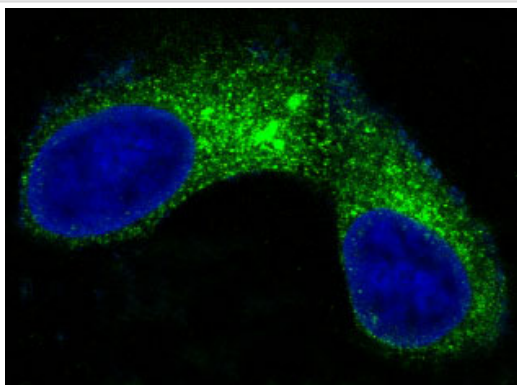
Images



Western blot analysis of CEA(CD66e) expression in Human colon cancer lysate.



Immunohistochemical analysis of paraffin-embedded human colon carcinoma, using CEA(CEACAM5) Antibody.



Immunofluorescent analysis of MCF-7 cells, using CEA(CEACAM5) Antibody.

Product Description

Carcinoembryonic antigen (CEA), also known as CD66e or CEACAM5, is a 180-200 kDa cell surface glycoprotein whose expression is elevated in intestinal carcinomas and other tumors. CEA mediates cell adhesion, though little more is known about its biological activity.

Background

Carcinoembryonic antigen (CEA), also known as CD66e or CEACAM5, is a 180-200 kDa cell surface glycoprotein whose expression is elevated in intestinal carcinomas and other tumors. CEA mediates cell adhesion, though little more is known about its biological activity.

Note: This product is for in vitro research use only