

## Actin Rabbit mAb

Catalog No: #59321

Package Size: #59321-1 50ul #59321-2 100ul

Orders: order@signalwayantibody.com

Support: tech@signalwayantibody.com

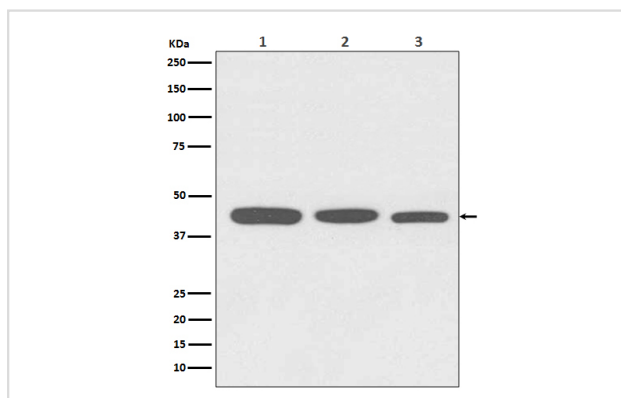
## Description

|                       |                                                                                                                |
|-----------------------|----------------------------------------------------------------------------------------------------------------|
| Product Name          | Actin Rabbit mAb                                                                                               |
| Host Species          | Rabbit                                                                                                         |
| Clonality             | Monoclonal                                                                                                     |
| Isotype               | Rabbit IgG                                                                                                     |
| Purification          | Affinity-chromatography                                                                                        |
| Applications          | WB IP                                                                                                          |
| Species Reactivity    | Human Mouse Rat                                                                                                |
| Specificity           | Actin Antibody detects endogenous levels of total Actin                                                        |
| Immunogen Description | A synthesized peptide derived from human Actin                                                                 |
| Other Names           | ACTA; ACTA1; Actin alpha skeletal muscle; Alpha Actin 1; alpha-actin; Alpha-actin-1; ASMA; CFTD; CFTD1; CFTDM; |
| Accession No.         | Uniprot:P68133                                                                                                 |
| Uniprot               | P68133                                                                                                         |
| Formulation           | Rabbit IgG in phosphate buffered saline , pH 7.4, 150mM NaCl, 0.02% sodium azide and 50% glycerol.             |
| Storage               | Store at +4°C short term. Store at -20°C long term. Avoid freeze / thaw cycle.                                 |

## Application Details

WB 1:1000~1:5000 IP 1:50

## Images



Western blot analysis of Actin expression in (1) HeLa cell lysate; (2) NIH/3T3 cell lysate; (3) C6 cell lysate.

## Product Description

Actins are highly conserved proteins that are involved in various types of cell motility and are ubiquitously expressed in all eukaryotic cells.

## Background

---

Actins are highly conserved proteins that are involved in various types of cell motility and are ubiquitously expressed in all eukaryotic cells.

---

Note: This product is for in vitro research use only