

Bcl-2 Rabbit mAb

Catalog No: #59323

Package Size: #59323-1 50ul #59323-2 100ul

Orders: order@signalwayantibody.com

Support: tech@signalwayantibody.com

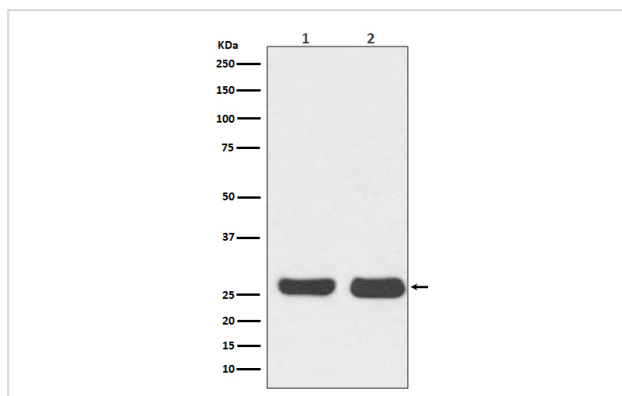
Description

Product Name	Bcl-2 Rabbit mAb
Host Species	Rabbit
Clonality	Monoclonal
Isotype	Rabbit IgG
Purification	Affinity-chromatography
Applications	WB IHC ICC/IF FC
Species Reactivity	Human Mouse
Specificity	Bcl-2 Antibody detects endogenous levels of total Bcl-2
Immunogen Description	A synthesized peptide derived from human Bcl-2
Other Names	Apoptosis regulator Bcl-2; BCL2;
Accession No.	Uniprot:P10415
Uniprot	P10415
Formulation	Rabbit IgG in phosphate buffered saline , pH 7.4, 150mM NaCl, 0.02% sodium azide and 50% glycerol.
Storage	Store at +4°C short term. Store at -20°C long term. Avoid freeze / thaw cycle.

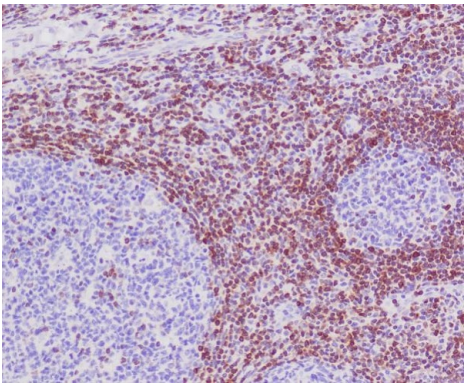
Application Details

WB 1:1000~1:2000 IHC 1:50~1:200 ICC/IF 1:50~1:200 FC 1:50

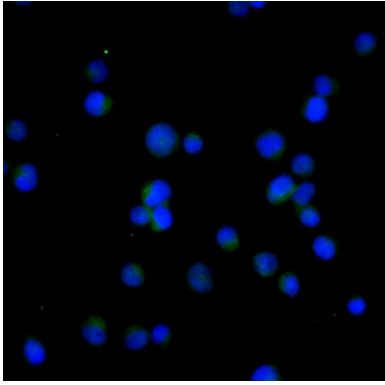
Images



Western blot analysis of Bcl-2 expression in (1) HeLa cell lysate; (2) NIH/3T3 cell lysate.



Immunohistochemical analysis of paraffin-embedded human tonsil, using Bcl-2 Antibody.



Immunofluorescent analysis of Jurkat cells, using Bcl-2 Antibody .

Product Description

This gene encodes an integral outer mitochondrial membrane protein that blocks the apoptotic death of some cells such as lymphocytes. Constitutive expression of BCL2, such as in the case of translocation of BCL2 to Ig heavy chain locus, is thought to be the cause of follicular lymphoma. Two transcript variants, produced by alternate splicing, differ in their C-terminal ends.

Background

This gene encodes an integral outer mitochondrial membrane protein that blocks the apoptotic death of some cells such as lymphocytes. Constitutive expression of BCL2, such as in the case of translocation of BCL2 to Ig heavy chain locus, is thought to be the cause of follicular lymphoma. Two transcript variants, produced by alternate splicing, differ in their C-terminal ends.

Note: This product is for in vitro research use only