

MINA53 Rabbit mAb

Catalog No: #59324

Package Size: #59324-1 50ul #59324-2 100ul

Orders: order@signalwayantibody.com

Support: tech@signalwayantibody.com

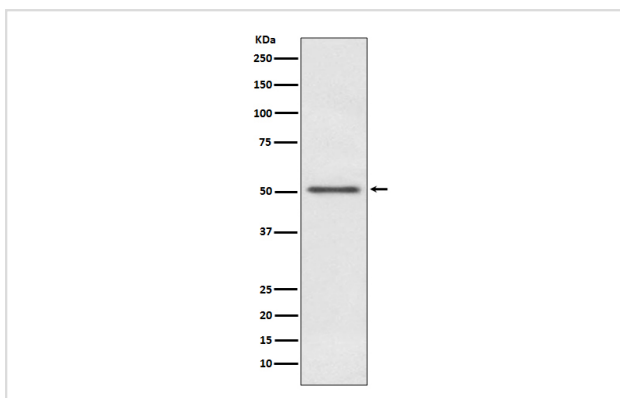
Description

Product Name	MINA53 Rabbit mAb
Host Species	Rabbit
Clonality	Monoclonal
Isotype	Rabbit IgG
Purification	Affinity-chromatography
Applications	WB ICC/IF
Species Reactivity	Human Mouse
Specificity	MINA53 Antibody detects endogenous levels of total MINA53
Immunogen Description	A synthesized peptide derived from human MINA53
Other Names	Histone lysine demethylase MINA; MDIG; MINA; NO52; ROX;
Accession No.	Uniprot:Q8IUF8
Uniprot	Q8IUF8
Formulation	Rabbit IgG in phosphate buffered saline , pH 7.4, 150mM NaCl, 0.02% sodium azide and 50% glycerol.
Storage	Store at +4°C short term. Store at -20°C long term. Avoid freeze / thaw cycle.

Application Details

WB 1:500~1:2000 ICC/IF 1:50~1:200

Images



Western blot analysis of MINA53 expression in A431 cell lysate.

Product Description

Involved in cellular proliferation. May play an important role in cell growth and survival. May be involved in ribosome biogenesis, most likely during the assembly process of pre-ribosomal particles.

Background

Involved in cellular proliferation. May play an important role in cell growth and survival. May be involved in ribosome biogenesis, most likely during the assembly process of pre-ribosomal particles.

Note: This product is for in vitro research use only