

Lipocalin-2 Rabbit mAb

Catalog No: #59335

Package Size: #59335-1 50ul #59335-2 100ul

Orders: order@signalwayantibody.com

Support: tech@signalwayantibody.com

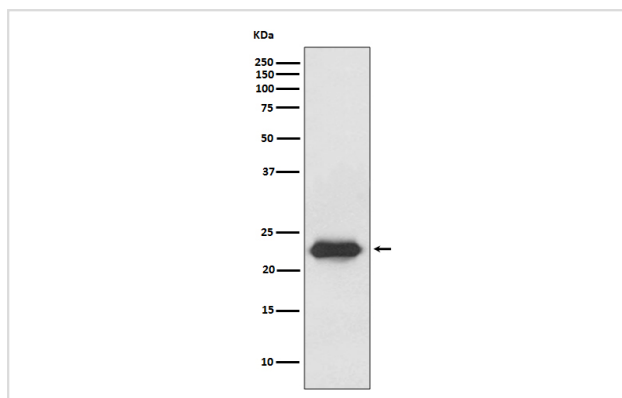
Description

Product Name	Lipocalin-2 Rabbit mAb
Host Species	Rabbit
Clonality	Monoclonal
Isotype	Rabbit IgG
Purification	Affinity-chromatography
Applications	WB IHC ICC/IF
Species Reactivity	Human
Specificity	Lipocalin-2 Antibody detects endogenous levels of total Lipocalin-2
Immunogen Description	A synthesized peptide derived from human Lipocalin-2
Other Names	LCN2; 24p3; MSFI; NGAL; Lipocalin-2; p25; Siderocalin; SV40 induced 24P3 protein; Uterocalin;
Accession No.	Uniprot:P80188
Uniprot	P80188
Formulation	Rabbit IgG in phosphate buffered saline , pH 7.4, 150mM NaCl, 0.02% sodium azide and 50% glycerol.
Storage	Store at +4°C short term. Store at -20°C long term. Avoid freeze / thaw cycle.

Application Details

WB 1:500~1:2000 IHC 1:50~1:200 ICC/IF 1:50~1:200

Images



Western blot analysis of Lipocalin-2 expression in SW480 cell lysate.

Product Description

Lipocalin-2 is involved in innate immunity, iron homeostasis, and apoptosis. Lipocalin-2 limits bacterial growth by binding to bacterial siderophores and sequestering iron. Binds iron through association with 2,5-dihydroxybenzoic acid (2,5-DHBA), a siderophore that shares structural similarities with bacterial enterobactin, and delivers or removes iron from the cell, depending on the context.

Background

Lipocalin-2 is involved in innate immunity, iron homeostasis, and apoptosis. Lipocalin-2 limits bacterial growth by binding to bacterial siderophores and sequestering iron. Binds iron through association with 2,5-dihydroxybenzoic acid (2,5-DHBA), a siderophore that shares structural similarities with bacterial enterobactin, and delivers or removes iron from the cell, depending on the context.

Note: This product is for in vitro research use only