

CD32 Rabbit mAb

Catalog No: #59339

Package Size: #59339-1 50ul #59339-2 100ul

Orders: order@signalwayantibody.com

Support: tech@signalwayantibody.com

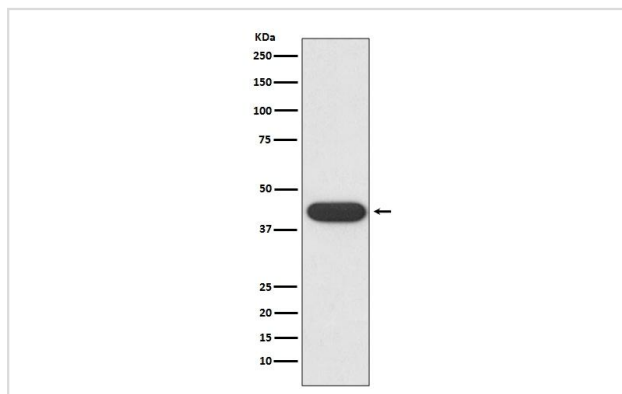
Description

Product Name	CD32 Rabbit mAb
Host Species	Rabbit
Clonality	Monoclonal
Clone No.	25C8
Isotype	Rabbit IgG
Purification	Affinity-chromatography
Applications	WB IHC
Species Reactivity	Human
Specificity	CD32 Antibody detects endogenous levels of total CD32
Immunogen Description	A synthesized peptide derived from human CD32
Target Name	CD32
Other Names	CD32; CD32A; CD32B; CD32C; FCG2; FcGR; FCGR2; FCGR2A; FCGR2B; FCGR2C; Fcgr3a; FCRII; IGFR2;
Accession No.	Uniprot:P12318
Uniprot	P12318
Formulation	Rabbit IgG in phosphate buffered saline , pH 7.4, 150mM NaCl, 0.02% sodium azide and 50% glycerol.
Storage	Store at +4°C short term. Store at -20°C long term. Avoid freeze / thaw cycle.

Application Details

WB 1:500~1:2000 IHC 1:50~1:200

Images



All Lanes:CD32 Antibody at 1/ 1000 dilution.Lane1:K562 cell lysate.Proteins at 20ug per laneSecondary: Goat Anti-Rabbit IgG(HRP) at 1/20000 dilutionPredicted band size : 43kDaObserved band size: 43kDa

Product Description

Binds to the Fc region of immunoglobulins gamma. Low affinity receptor. By binding to IgG it initiates cellular responses against pathogens and soluble antigens.

Background

Binds to the Fc region of immunoglobulins gamma. Low affinity receptor. By binding to IgG it initiates cellular responses against pathogens and soluble antigens.

Note: This product is for in vitro research use only