

CD59 Rabbit mAb

Catalog No: #59340

Package Size: #59340-1 50ul #59340-2 100ul

Orders: order@signalwayantibody.com

Support: tech@signalwayantibody.com

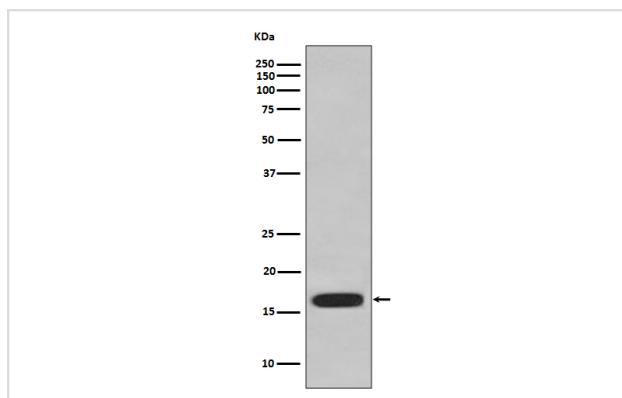
Description

Product Name	CD59 Rabbit mAb
Host Species	Rabbit
Clonality	Monoclonal
Isotype	Rabbit IgG
Purification	Affinity-chromatography
Applications	WB ICC/IF IP FC
Species Reactivity	Human
Specificity	CD59 Antibody detects endogenous levels of total CD59
Immunogen Description	A synthesized peptide derived from human CD59
Other Names	CD59 glycoprotein; HRF20; MAC-IP; MEM43 antigen; MACIF; MIRL; Protectin; MIC11; MIN1; p18 20;
Accession No.	Uniprot:P13987
Uniprot	P13987
Formulation	Rabbit IgG in phosphate buffered saline , pH 7.4, 150mM NaCl, 0.02% sodium azide and 50% glycerol.
Storage	Store at +4°C short term. Store at -20°C long term. Avoid freeze / thaw cycle.

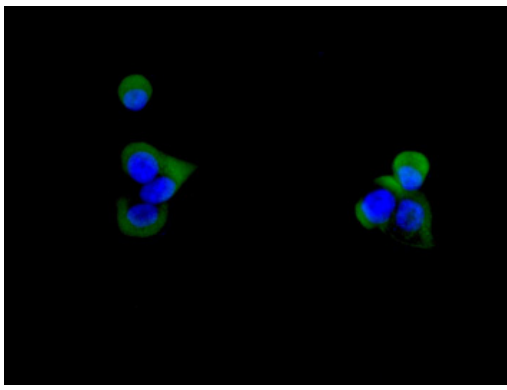
Application Details

WB 1:1000~1:5000 ICC/IF 1:50~1:200 IP 1:50 FC 1:50

Images



Western blot analysis of CD59 expression in HUVEC cell lysate.



Immunofluorescent analysis of BxPC-3 cells, using CD59 Antibody .

Product Description

CD59 is a GPI-anchored glycoprotein that is expressed on leukocytes, vascular endothelial cells, various epithelial cells and placenta. Involved in signal transduction for T-cell activation complexed to a protein tyrosine kinase.

Background

CD59 is a GPI-anchored glycoprotein that is expressed on leukocytes, vascular endothelial cells, various epithelial cells and placenta. Involved in signal transduction for T-cell activation complexed to a protein tyrosine kinase.

Note: This product is for in vitro research use only