

Cyclophilin A Rabbit mAb

Catalog No: #59342

Package Size: #59342-1 50ul #59342-2 100ul

Orders: order@signalwayantibody.com

Support: tech@signalwayantibody.com

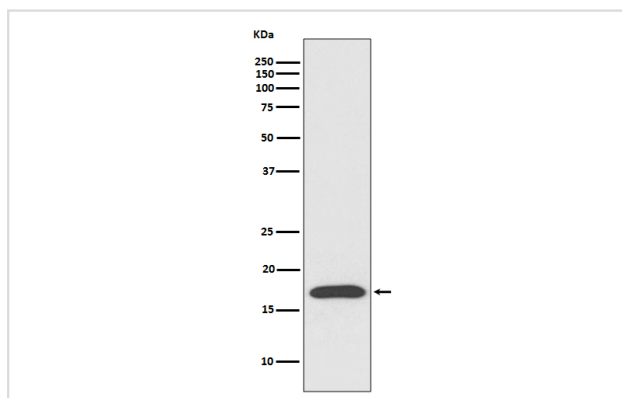
Description

Product Name	Cyclophilin A Rabbit mAb
Host Species	Rabbit
Clonality	Monoclonal
Isotype	Rabbit IgG
Purification	Affinity-chromatography
Applications	WB IHC
Species Reactivity	Human Mouse Rat
Specificity	Cyclophilin A Antibody detects endogenous levels of total Cyclophilin A
Immunogen Description	A synthesized peptide derived from human Cyclophilin A
Other Names	CyclophilinA; Cyclosporin A binding protein; CYPA; CYPH; Peptidyl-prolyl cis-trans isomerase A; Rotamase A; PPlase A;
Accession No.	Uniprot:P62937
Uniprot	P62937
Formulation	Rabbit IgG in phosphate buffered saline , pH 7.4, 150mM NaCl, 0.02% sodium azide and 50% glycerol.
Storage	Store at +4°C short term. Store at -20°C long term. Avoid freeze / thaw cycle.

Application Details

WB 1:500~1:2000 IHC 1:50~1:200

Images



Western blot analysis of Cyclophilin A expression in HepG2 cell lysate.

Product Description

PPIases accelerate the folding of proteins. It catalyzes the cis-trans isomerization of proline imidic peptide bonds in oligopeptides.

Background

PPIases accelerate the folding of proteins. It catalyzes the cis-trans isomerization of proline imidic peptide bonds in oligopeptides.

Note: This product is for in vitro research use only