

Endothelin B Receptor Rabbit mAb

Catalog No: #59343

Package Size: #59343-1 50ul #59343-2 100ul

Orders: order@signalwayantibody.com

Support: tech@signalwayantibody.com

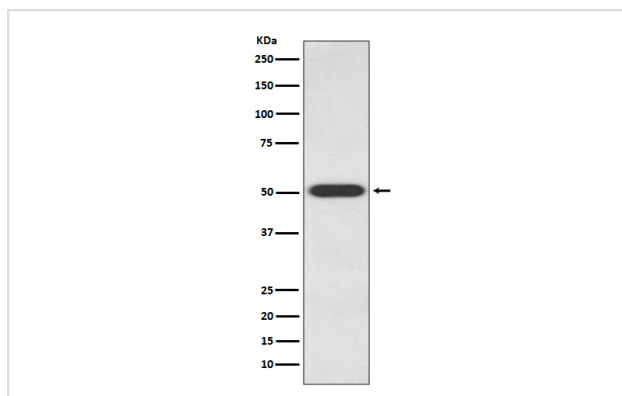
Description

Product Name	Endothelin B Receptor Rabbit mAb
Host Species	Rabbit
Clonality	Monoclonal
Isotype	Rabbit IgG
Purification	Affinity-chromatography
Applications	WB IP
Species Reactivity	Human
Specificity	Endothelin B Receptor Antibody detects endogenous levels of total Endothelin B Receptor
Immunogen Description	A synthesized peptide derived from human Endothelin B Receptor
Other Names	ABCDS; Ednra; EDNRB; Endothelin B receptor precursor; ETB; ETBR; ETRB; Hirschsprung disease;
Accession No.	Uniprot:P24530
Uniprot	P24530
Formulation	Rabbit IgG in phosphate buffered saline , pH 7.4, 150mM NaCl, 0.02% sodium azide and 50% glycerol.
Storage	Store at +4°C short term. Store at -20°C long term. Avoid freeze / thaw cycle.

Application Details

WB 1:500~1:2000 IP 1:50

Images



Western blot analysis of Endothelin B Receptor expression in 293T cell lysate.

Product Description

Non-specific receptor for endothelin 1, 2, and 3. Mediates its action by association with G proteins that activate a phosphatidylinositol-calcium second messenger system.

Background

Non-specific receptor for endothelin 1, 2, and 3. Mediates its action by association with G proteins that activate a phosphatidylinositol-calcium second messenger system.

Note: This product is for in vitro research use only