

## SDHA Rabbit mAb

Catalog No: #59350

Package Size: #59350-1 50ul #59350-2 100ul

Orders: order@signalwayantibody.com

Support: tech@signalwayantibody.com

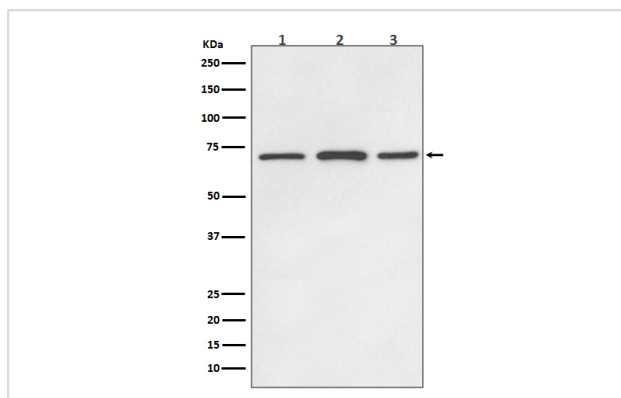
## Description

Product Name	SDHA Rabbit mAb
Host Species	Rabbit
Clonality	Monoclonal
Isotype	Rabbit IgG
Purification	Affinity-chromatography
Applications	WB IHC ICC/IF IP FC
Species Reactivity	Human Mouse Rat
Specificity	SDHA Antibody detects endogenous levels of total SDHA
Immunogen Description	A synthesized peptide derived from human SDHA
Other Names	PGL5; SDH1; SDH2; SDHA; SDHF;
Accession No.	Uniprot:P31040
Uniprot	P31040
Formulation	Rabbit IgG in phosphate buffered saline , pH 7.4, 150mM NaCl, 0.02% sodium azide and 50% glycerol.
Storage	Store at +4°C short term. Store at -20°C long term. Avoid freeze / thaw cycle.

## Application Details

WB 1:500~1:2000 IHC 1:50~1:200 ICC/IF 1:50~1:200 IP 1:20 FC 1:20

## Images



Western blot analysis of SDHA expression in (1) HeLa cell lysate; (2) Mouse brain lysate; (3) Rat brain lysate;

## Product Description

Flavoprotein (FP) subunit of succinate dehydrogenase (SDH) that is involved in complex II of the mitochondrial electron transport chain and is responsible for transferring electrons from succinate to ubiquinone.

## Background

---

Flavoprotein (FP) subunit of succinate dehydrogenase (SDH) that is involved in complex II of the mitochondrial electron transport chain and is responsible for transferring electrons from succinate to ubiquinone.

---

Note: This product is for in vitro research use only