

## CYP2E1 Rabbit mAb

Catalog No: #59351

Package Size: #59351-1 50ul #59351-2 100ul

Orders: order@signalwayantibody.com

Support: tech@signalwayantibody.com

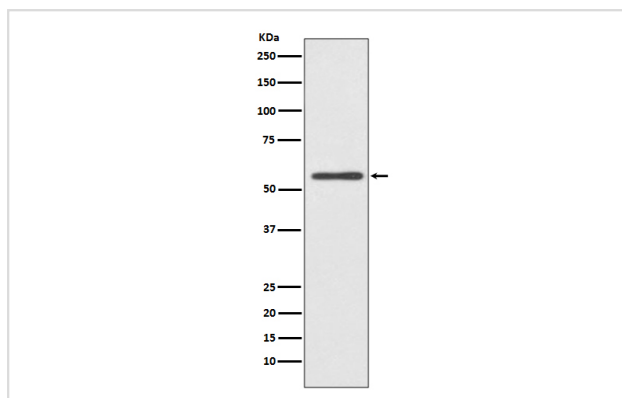
## Description

Product Name	CYP2E1 Rabbit mAb
Host Species	Rabbit
Clonality	Monoclonal
Isotype	Rabbit IgG
Purification	Affinity-chromatography
Applications	WB
Species Reactivity	Human Mouse Rat
Specificity	CYP2E1 Antibody detects endogenous levels of total CYP2E1
Immunogen Description	A synthesized peptide derived from human CYP2E1
Other Names	Cytochrome P450 2E1; CYP1IIE1; Cytochrome P450-J; CYP2E; P450C2E; CYP1IIE1;
Accession No.	Uniprot:P05181
Uniprot	P05181
Formulation	Rabbit IgG in phosphate buffered saline , pH 7.4, 150mM NaCl, 0.02% sodium azide and 50% glycerol.
Storage	Store at +4°C short term. Store at -20°C long term. Avoid freeze / thaw cycle.

## Application Details

WB 1:500~1:2000

## Images



Western blot analysis of CYP2E1 expression in HeLa cell lysate.

## Product Description

Metabolizes several precarcinogens, drugs, and solvents to reactive metabolites. Inactivates a number of drugs and xenobiotics and also bioactivates many xenobiotic substrates to their hepatotoxic or carcinogenic forms.

## Background

---

Metabolizes several precarcinogens, drugs, and solvents to reactive metabolites. Inactivates a number of drugs and xenobiotics and also bioactivates many xenobiotic substrates to their hepatotoxic or carcinogenic forms.

---

Note: This product is for in vitro research use only