

Growth Hormone Rabbit mAb

Catalog No: #59355



Package Size: #59355-1 50ul #59355-2 100ul

Orders: order@signalwayantibody.com
Support: tech@signalwayantibody.com

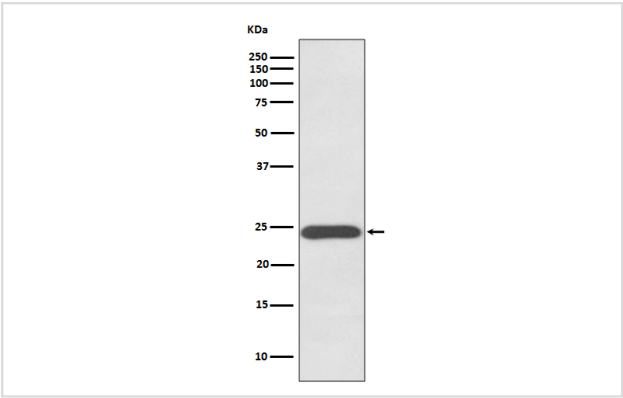
Description

Product Name	Growth Hormone Rabbit mAb
Host Species	Rabbit
Clonality	Monoclonal
Isotype	Rabbit IgG
Purification	Affinity-chromatography
Applications	WB IHC IP
Species Reactivity	Human
Specificity	Growth Hormone Antibody detects endogenous levels of total Growth Hormone
Immunogen Description	A synthesized peptide derived from human Growth Hormone
Other Names	GH1; GHN; Growth hormone 1; hGH-N; IGHD1B; Pituitary growth hormone; RNGHGP; Somatotropin;
Accession No.	Uniprot:P01241
Uniprot	P01241
Formulation	Rabbit IgG in phosphate buffered saline , pH 7.4, 150mM NaCl, 0.02% sodium azide and 50% glycerol.
Storage	Store at +4°C short term. Store at -20°C long term. Avoid freeze / thaw cycle.

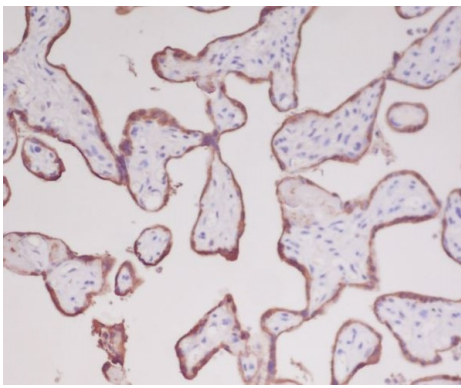
Application Details

WB 1:500~1:2000 IHC 1:50~1:200 IP 1:20

Images



Western blot analysis of Growth Hormone expression in human placenta lysate.



Immunohistochemical analysis of paraffin-embedded human placenta, using Growth Hormone Antibody.

Product Description

Plays an important role in growth control. Its major role in stimulating body growth is to stimulate the liver and other tissues to secrete IGF-1. It stimulates both the differentiation and proliferation of myoblasts. It also stimulates amino acid uptake and protein synthesis in muscle and other tissues.

Background

Plays an important role in growth control. Its major role in stimulating body growth is to stimulate the liver and other tissues to secrete IGF-1. It stimulates both the differentiation and proliferation of myoblasts. It also stimulates amino acid uptake and protein synthesis in muscle and other tissues.

Note: This product is for in vitro research use only