

Rhodopsin Rabbit mAb

Catalog No: #59357

Package Size: #59357-1 50ul #59357-2 100ul

Orders: order@signalwayantibody.com

Support: tech@signalwayantibody.com

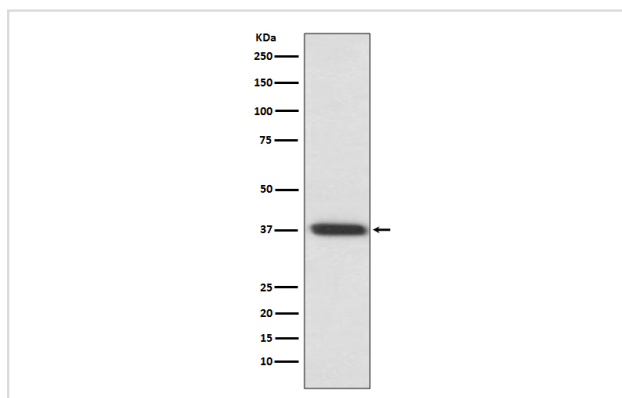
Description

Product Name	Rhodopsin Rabbit mAb
Host Species	Rabbit
Clonality	Monoclonal
Isotype	Rabbit IgG
Purification	Affinity-chromatography
Applications	WB IHC
Species Reactivity	Human Rat
Specificity	Rhodopsin Antibody detects endogenous levels of total Rhodopsin
Immunogen Description	A synthesized peptide derived from human Rhodopsin
Other Names	CSNBAD1; OPN2; opsd; Opsin 2 rod pigment; Opsin2; Retinitis pigmentosa 4 autosomal dominant; RHO; Rhodopsin; RP4;
Accession No.	Uniprot:P08100
Uniprot	P08100
Formulation	Rabbit IgG in phosphate buffered saline , pH 7.4, 150mM NaCl, 0.02% sodium azide and 50% glycerol.
Storage	Store at +4°C short term. Store at -20°C long term. Avoid freeze / thaw cycle.

Application Details

WB 1:500~1:2000 IHC 1:50~1:200

Images



Western blot analysis of Rhodopsin expression in rat eyeball lysate.

Product Description

Photoreceptor required for image-forming vision at low light intensity. Required for photoreceptor cell viability after birth. Light-induced isomerization of 11-cis to all-trans retinal triggers a conformational change leading to G-protein activation and release of all-trans retinal.

Background

Photoreceptor required for image-forming vision at low light intensity. Required for photoreceptor cell viability after birth. Light-induced isomerization of 11-cis to all-trans retinal triggers a conformational change leading to G-protein activation and release of all-trans retinal.

Note: This product is for in vitro research use only