

DRD1 Rabbit mAb

Catalog No: #59359

Package Size: #59359-1 50ul #59359-2 100ul

Orders: order@signalwayantibody.comSupport: tech@signalwayantibody.com

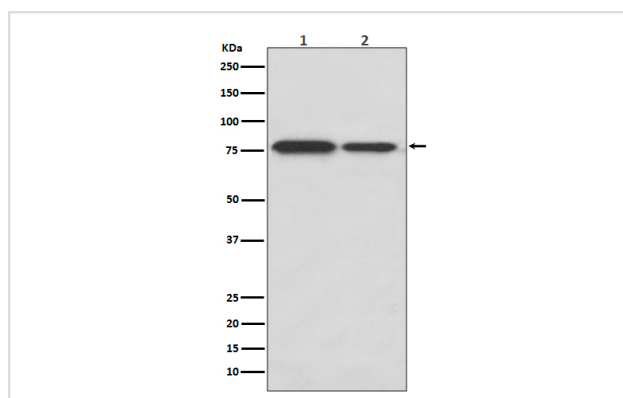
Description

Product Name	DRD1 Rabbit mAb
Host Species	Rabbit
Clonality	Monoclonal
Isotype	Rabbit IgG
Purification	Affinity-chromatography
Applications	WB
Species Reactivity	Human Mouse Rat
Specificity	DRD1 Antibody detects endogenous levels of total DRD1
Immunogen Description	A synthesized peptide derived from human DRD1
Other Names	D(1A) dopamine receptor; DADR; Dopamine D1 receptor; DR D1A1; DRD1; DRD1A;
Accession No.	Uniprot:P21728
Uniprot	P21728
Formulation	Rabbit IgG in phosphate buffered saline , pH 7.4, 150mM NaCl, 0.02% sodium azide and 50% glycerol.
Storage	Store at +4°C short term. Store at -20°C long term. Avoid freeze / thaw cycle.

Application Details

WB 1:500~1:2000

Images



Western blot analysis of DRD1 expression in (1) SH-SY5Y cell lysate; (2) Mouse kidney lysate.

Product Description

Dopamine receptor whose activity is mediated by G proteins which activate adenylyl cyclase.

Background

Dopamine receptor whose activity is mediated by G proteins which activate adenylyl cyclase.

Note: This product is for in vitro research use only