

MHC Class II Rabbit mAb

Catalog No: #59360

Package Size: #59360-1 50ul #59360-2 100ul

Orders: order@signalwayantibody.com

Support: tech@signalwayantibody.com

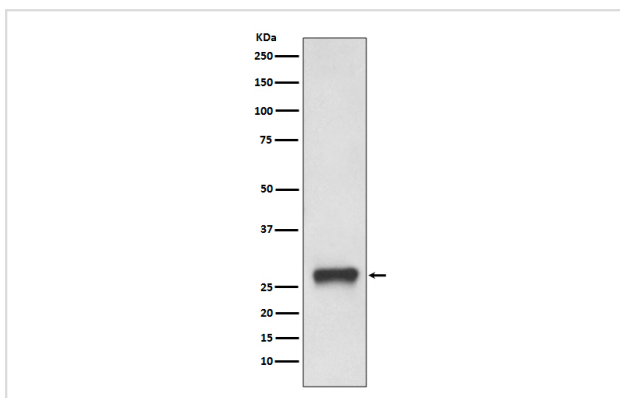
Description

Product Name	MHC Class II Rabbit mAb
Host Species	Rabbit
Clonality	Monoclonal
Isotype	Rabbit IgG
Purification	Affinity-chromatography
Applications	WB IHC ICC/IF IP
Species Reactivity	Human
Specificity	MHC Class II Antibody detects endogenous levels of total MHC Class II
Immunogen Description	A synthesized peptide derived from human MHC Class II
Other Names	HLA class II histocompatibility antigen, DP beta 1 chain; HLADPB1; HLADP1B; HLADM;
Accession No.	Uniprot:P04440
Uniprot	P04440
Formulation	Rabbit IgG in phosphate buffered saline , pH 7.4, 150mM NaCl, 0.02% sodium azide and 50% glycerol.
Storage	Store at +4°C short term. Store at -20°C long term. Avoid freeze / thaw cycle.

Application Details

WB 1:1000~1:5000 IHC 1:100~1:500 ICC/IF 1:50~1:200 IP 1:50

Images



Western blot analysis of MHC Class II expression in Daudi cell lysate.

Product Description

HLA-DPB belongs to the HLA class II beta chain paralogues. This class II molecule is a heterodimer consisting of an alpha (DPA) and a beta chain (DPB), both anchored in the membrane. It plays a central role in the immune system by presenting peptides derived from extracellular proteins.

Background

HLA-DPB belongs to the HLA class II beta chain paralogues. This class II molecule is a heterodimer consisting of an alpha (DPA) and a beta chain (DPB), both anchored in the membrane. It plays a central role in the immune system by presenting peptides derived from extracellular proteins.

Note: This product is for in vitro research use only