

## CD62P Rabbit mAb

Catalog No: #59361

Package Size: #59361-1 50ul #59361-2 100ul

Orders: order@signalwayantibody.com

Support: tech@signalwayantibody.com

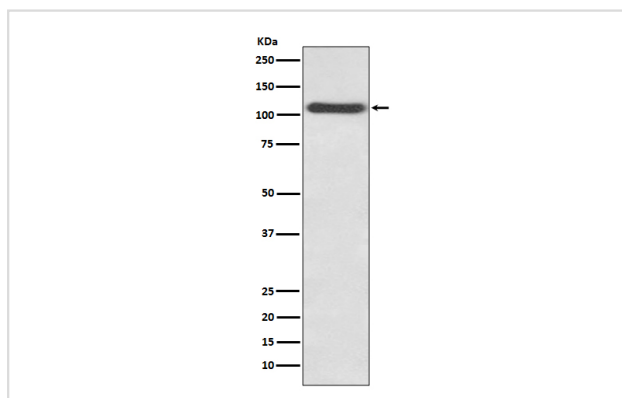
## Description

Product Name	CD62P Rabbit mAb
Host Species	Rabbit
Clonality	Monoclonal
Isotype	Rabbit IgG
Purification	Affinity-chromatography
Applications	WB IHC
Species Reactivity	Human
Specificity	CD62P Antibody detects endogenous levels of total CD62P
Immunogen Description	A synthesized peptide derived from human CD62P
Other Names	P-selectin; CD62 antigen-like family member P; Granule membrane protein 140; GMP-140; PADGEM; CD62P; SELP; GMRP;
Accession No.	Uniprot:P16109
Uniprot	P16109
Formulation	Rabbit IgG in phosphate buffered saline , pH 7.4, 150mM NaCl, 0.02% sodium azide and 50% glycerol.
Storage	Store at +4°C short term. Store at -20°C long term. Avoid freeze / thaw cycle.

## Application Details

WB 1:500~1:2000 IHC 1:50~1:200

## Images



Western blot analysis of CD62P expression in HUVEC cell lysate.

## Product Description

Ca<sup>2+</sup>-dependent receptor for myeloid cells that binds to carbohydrates on neutrophils and monocytes. Mediates the interaction of activated endothelial cells or platelets with leukocytes. The ligand recognized is sialyl-Lewis X. Mediates rapid rolling of leukocyte rolling over vascular surfaces during the initial steps in inflammation through interaction with PSGL1.

## Background

---

Ca<sup>2+</sup>-dependent receptor for myeloid cells that binds to carbohydrates on neutrophils and monocytes. Mediates the interaction of activated endothelial cells or platelets with leukocytes. The ligand recognized is sialyl-Lewis X. Mediates rapid rolling of leukocyte rolling over vascular surfaces during the initial steps in inflammation through interaction with PSGL1.

---

Note: This product is for in vitro research use only