

## DCAMKL1 Rabbit mAb

Catalog No: #59369

Package Size: #59369-1 50ul #59369-2 100ul

Orders: order@signalwayantibody.com

Support: tech@signalwayantibody.com

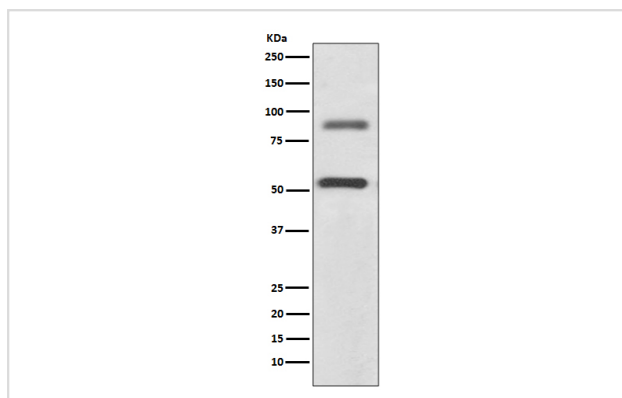
## Description

Product Name	DCAMKL1 Rabbit mAb
Host Species	Rabbit
Clonality	Monoclonal
Isotype	Rabbit IgG
Purification	Affinity-chromatography
Applications	WB IHC ICC/IF FC
Species Reactivity	Human Mouse Rat
Specificity	DCAMKL1 Antibody detects endogenous levels of total DCAMKL1
Immunogen Description	A synthesized peptide derived from human DCAMKL1
Other Names	CL1; CLICK1; Cpg16; DCDC3A; Dclk; Dclk1;
Accession No.	Uniprot:O15075
Uniprot	O15075
Formulation	Rabbit IgG in phosphate buffered saline , pH 7.4, 150mM NaCl, 0.02% sodium azide and 50% glycerol.
Storage	Store at +4°C short term. Store at -20°C long term. Avoid freeze / thaw cycle.

## Application Details

WB 1:500~1:2000 IHC 1:50~1:200 ICC/IF 1:50~1:200 FC 1:500

## Images



Western blot analysis of DCAMKL1 expression in SH-SY5Y cell lysate;.

## Product Description

Probable kinase that may be involved in a calcium-signaling pathway controlling neuronal migration in the developing brain. May also participate in functions of the mature nervous system.

## Background

---

Probable kinase that may be involved in a calcium-signaling pathway controlling neuronal migration in the developing brain. May also participate in functions of the mature nervous system.

---

Note: This product is for in vitro research use only