

L1CAM Rabbit mAb

Catalog No: #59372

Package Size: #59372-1 50ul #59372-2 100ul

Orders: order@signalwayantibody.com

Support: tech@signalwayantibody.com

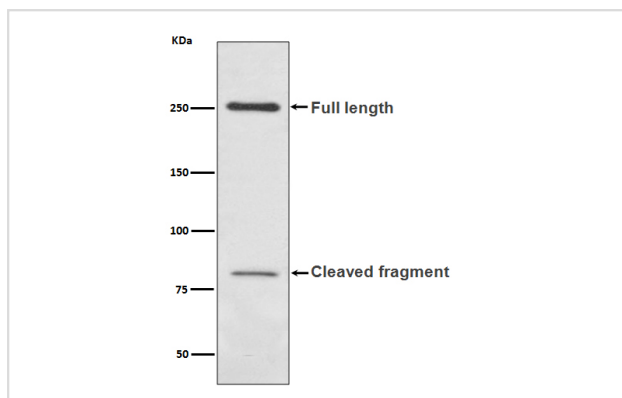
Description

Product Name	L1CAM Rabbit mAb
Host Species	Rabbit
Clonality	Monoclonal
Isotype	Rabbit IgG
Purification	Affinity-chromatography
Applications	WB IHC
Species Reactivity	Human
Specificity	L1CAM Antibody detects endogenous levels of total L1CAM
Immunogen Description	A synthesized peptide derived from human L1CAM
Other Names	CAML1; CD171; HSAS1; Hyd; L1-NCAM; MASA; MIC5; NCAML1; NILE; S10; SPG1;
Accession No.	Uniprot:P32004
Uniprot	P32004
Formulation	Rabbit IgG in phosphate buffered saline , pH 7.4, 150mM NaCl, 0.02% sodium azide and 50% glycerol.
Storage	Store at +4°C short term. Store at -20°C long term. Avoid freeze / thaw cycle.

Application Details

WB 1:500~1:2000 IHC 1:50~1:200

Images



Western blot analysis of L1CAM expression in human fetal kidney lysate.

Product Description

Cell adhesion molecule with an important role in the development of the nervous system. Involved in neuron-neuron adhesion, neurite fasciculation, outgrowth of neurites, etc. Binds to axonin on neurons.

Background

Cell adhesion molecule with an important role in the development of the nervous system. Involved in neuron-neuron adhesion, neurite fasciculation, outgrowth of neurites, etc. Binds to axonin on neurons.

Note: This product is for in vitro research use only