

Catalase Rabbit mAb

Catalog No: #59379

Package Size: #59379-1 50ul #59379-2 100ul

Orders: order@signalwayantibody.comSupport: tech@signalwayantibody.com

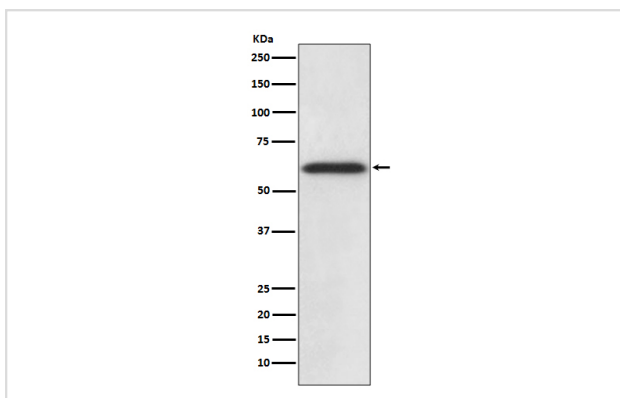
Description

Product Name	Catalase Rabbit mAb
Host Species	Rabbit
Clonality	Monoclonal
Isotype	Rabbit IgG
Purification	Affinity-chromatography
Applications	WB IHC
Species Reactivity	Human Mouse Rat
Specificity	Catalase Antibody detects endogenous levels of total Catalase
Immunogen Description	A synthesized peptide derived from human Catalase
Other Names	Cas1; CAT; Catalase; Cs1;
Accession No.	Uniprot:P04040
Uniprot	P04040
Formulation	Rabbit IgG in phosphate buffered saline , pH 7.4, 150mM NaCl, 0.02% sodium azide and 50% glycerol.
Storage	Store at +4°C short term. Store at -20°C long term. Avoid freeze / thaw cycle.

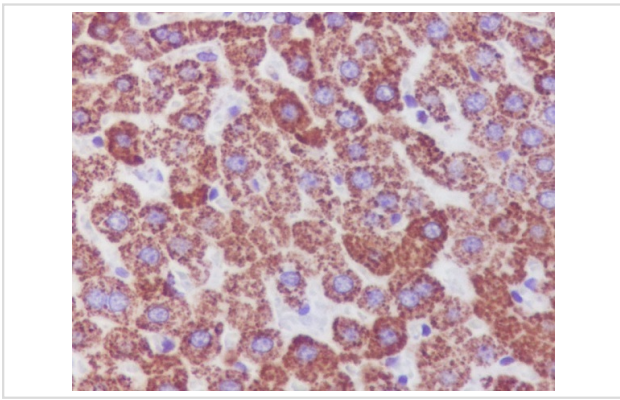
Application Details

WB 1:500~1:1000 IHC 1:50~1:200

Images



Western blot analysis of Catalase expression in HepG2 cell lysate.



Immunohistochemical analysis of paraffin-embedded rat liver, using Catalase Antibody.

Product Description

Catalase catalyzes the conversion of hydrogen peroxide to water and oxygen. Research studies show that overexpression of this antioxidant enzyme increases the ability of pancreatic β -cells to scavenge reactive oxygen species (ROS), thereby protecting pancreatic β -cells from oxidative stress.

Background

Catalase catalyzes the conversion of hydrogen peroxide to water and oxygen. Research studies show that overexpression of this antioxidant enzyme increases the ability of pancreatic β -cells to scavenge reactive oxygen species (ROS), thereby protecting pancreatic β -cells from oxidative stress.

Note: This product is for in vitro research use only