

NEFM Rabbit mAb

Catalog No: #59387

Package Size: #59387-1 50ul #59387-2 100ul

Orders: order@signalwayantibody.comSupport: tech@signalwayantibody.com

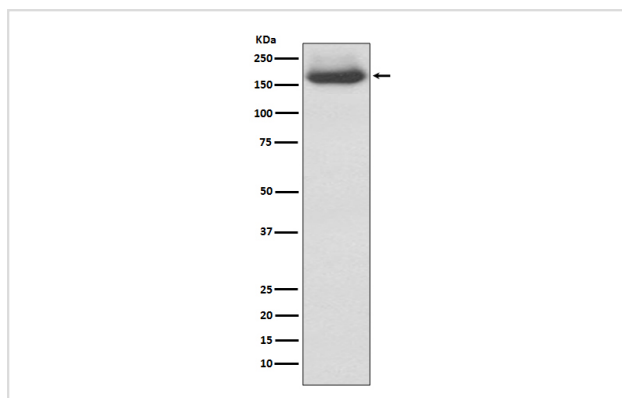
Description

Product Name	NEFM Rabbit mAb
Host Species	Rabbit
Clonality	Monoclonal
Isotype	Rabbit IgG
Purification	Affinity-chromatography
Applications	WB IHC ICC/IF IP
Species Reactivity	Human
Specificity	NEFM Antibody detects endogenous levels of total NEFM
Immunogen Description	A synthesized peptide derived from human NEFM
Other Names	150kDa medium; NEF3; NEFM; Neurofilament 3; NF160; NFM;
Accession No.	Uniprot:P07197
Uniprot	P07197
Formulation	Rabbit IgG in phosphate buffered saline , pH 7.4, 150mM NaCl, 0.02% sodium azide and 50% glycerol.
Storage	Store at +4°C short term. Store at -20°C long term. Avoid freeze / thaw cycle.

Application Details

WB 1:1000~1:5000 IHC 1:50~1:200 ICC/IF 1:50~1:200 IP 1:20

Images



Western blot analysis of NEFM expression in 293T cell lysate.

Product Description

Integrins are heterodimers composed of noncovalently associated transmembrane α and β subunits. The 16 α and 8 β subunits heterodimerize to produce more than 20 different receptors. Antibodies to this protein are useful to identify neurons and their processes in tissue sections and in tissue culture.

Background

Integrins are heterodimers composed of noncovalently associated transmembrane α and β subunits. The 16 α and 8 β subunits heterodimerize to produce more than 20 different receptors. Antibodies to this protein are useful to identify neurons and their processes in tissue sections and in tissue culture.

Note: This product is for in vitro research use only