

Syndecan 1 Rabbit mAb

Catalog No: #59388

Package Size: #59388-1 50ul #59388-2 100ul

Orders: order@signalwayantibody.com

Support: tech@signalwayantibody.com

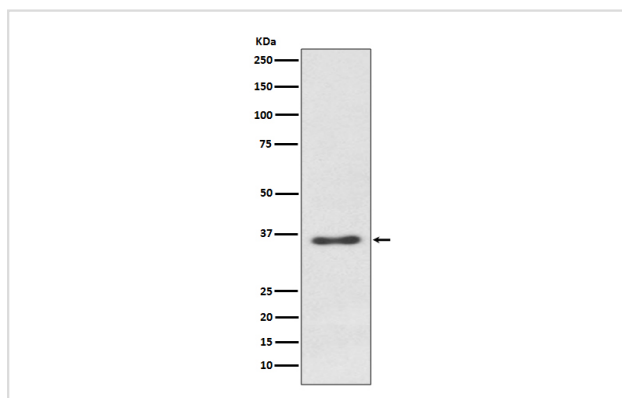
Description

Product Name	Syndecan 1 Rabbit mAb
Host Species	Rabbit
Clonality	Monoclonal
Isotype	Rabbit IgG
Purification	Affinity-chromatography
Applications	WB IHC ICC/IF
Species Reactivity	Human Mouse Rat
Specificity	Syndecan 1 Antibody detects endogenous levels of total Syndecan 1
Immunogen Description	A synthesized peptide derived from human Syndecan 1
Other Names	CD138; CD138 antigen; heparan sulfate proteoglycan fibroblast growth factor receptor; Sdc1; SYND1; Syndecan 1; syndecan proteoglycan 1;
Accession No.	Uniprot:P18827
Uniprot	P18827
Formulation	Rabbit IgG in phosphate buffered saline , pH 7.4, 150mM NaCl, 0.02% sodium azide and 50% glycerol.
Storage	Store at +4°C short term. Store at -20°C long term. Avoid freeze / thaw cycle.

Application Details

WB 1:500~1:2000 IHC 1:100~1:500 ICC/IF 1:50~1:200

Images



Western blot analysis of Syndecan 1 expression in Ramos cell lysate.

Product Description

Cell surface proteoglycan that bears both heparan sulfate and chondroitin sulfate and that links the cytoskeleton to the interstitial matrix.

Background

Cell surface proteoglycan that bears both heparan sulfate and chondroitin sulfate and that links the cytoskeleton to the interstitial matrix.

Note: This product is for in vitro research use only