

Claudin 5 Rabbit mAb

Catalog No: #59389

Package Size: #59389-1 50ul #59389-2 100ul

Orders: order@signalwayantibody.comSupport: tech@signalwayantibody.com

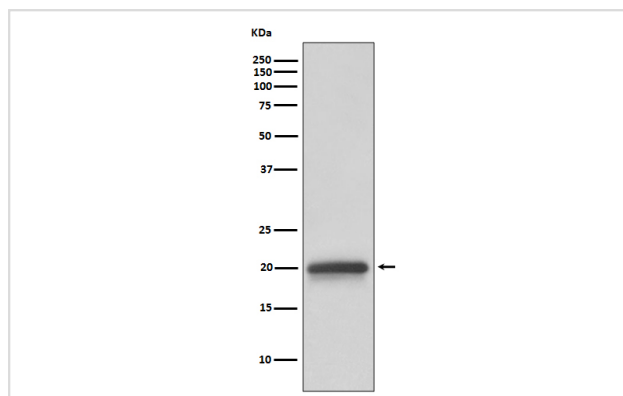
Description

Product Name	Claudin 5 Rabbit mAb
Host Species	Rabbit
Clonality	Monoclonal
Isotype	Rabbit IgG
Purification	Affinity-chromatography
Applications	WB IHC
Species Reactivity	Human
Specificity	Claudin 5 Antibody detects endogenous levels of total Claudin 5
Immunogen Description	A synthesized peptide derived from human Claudin 5
Other Names	Claudin5; Transmembrane protein deleted in VCFS; BEC1; CPETRL1; TMDVCF; CLDN5; AWAL; TMVCF;
Accession No.	Uniprot:O00501
Uniprot	O00501
Formulation	Rabbit IgG in phosphate buffered saline , pH 7.4, 150mM NaCl, 0.02% sodium azide and 50% glycerol.
Storage	Store at +4°C short term. Store at -20°C long term. Avoid freeze / thaw cycle.

Application Details

WB 1:500~1:2000 IHC 1:50~1:200

Images



Western blot analysis of Claudin 5 expression in human fetal brain lysate.

Product Description

Plays a major role in tight junction-specific obliteration of the intercellular space.

Background

Plays a major role in tight junction-specific obliteration of the intercellular space.

Note: This product is for in vitro research use only