

Podoplanin Rabbit mAb

Catalog No: #59390

Package Size: #59390-1 50ul #59390-2 100ul

Orders: order@signalwayantibody.com

Support: tech@signalwayantibody.com

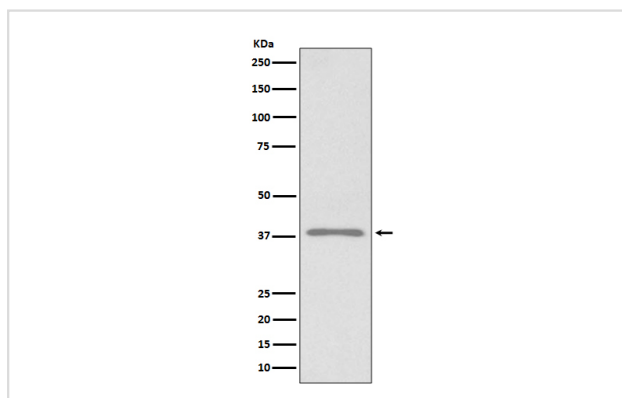
Description

Product Name	Podoplanin Rabbit mAb
Host Species	Rabbit
Clonality	Monoclonal
Isotype	Rabbit IgG
Purification	Affinity-chromatography
Applications	WB IHC
Species Reactivity	Human
Specificity	Podoplanin Antibody detects endogenous levels of total Podoplanin
Immunogen Description	A synthesized peptide derived from human Podoplanin
Other Names	Aggrus; Glycoprotein 36 KD; GP36; GP38; GP40; HT1A1; hT1alpha1; hT1alpha2; OTS8; PA2.26; Pdpn; Podoplanin; T1 alpha; T1A 2; T11A;
Accession No.	Uniprot:Q86YL7
Uniprot	Q86YL7
Formulation	Rabbit IgG in phosphate buffered saline , pH 7.4, 150mM NaCl, 0.02% sodium azide and 50% glycerol.
Storage	Store at +4°C short term. Store at -20°C long term. Avoid freeze / thaw cycle.

Application Details

WB 1:500~1:2000 IHC 1:50~1:200

Images



Western blot analysis of Podoplanin expression in 293T cell lysate.

Product Description

May be involved in cell migration and/or actin cytoskeleton organization. When expressed in keratinocytes, induces changes in cell morphology with transfected cells showing an elongated shape, numerous membrane protrusions, major reorganization of the actin cytoskeleton, increased motility and decreased cell adhesion.

Background

May be involved in cell migration and/or actin cytoskeleton organization. When expressed in keratinocytes, induces changes in cell morphology with transfected cells showing an elongated shape, numerous membrane protrusions, major reorganization of the actin cytoskeleton, increased motility and decreased cell adhesion.

Note: This product is for in vitro research use only