

Tyrosinase Rabbit mAb

Catalog No: #59392

Package Size: #59392-1 50ul #59392-2 100ul

Orders: order@signalwayantibody.comSupport: tech@signalwayantibody.com

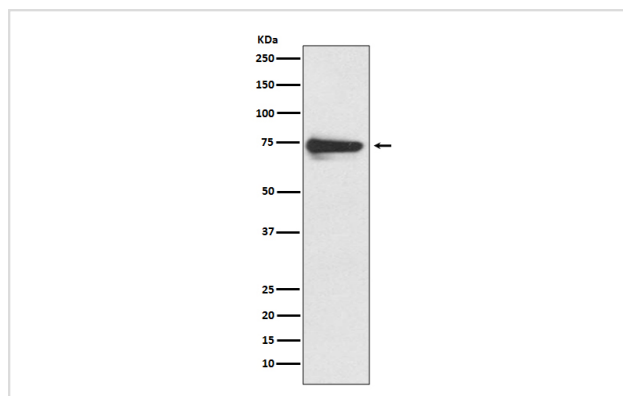
Description

Product Name	Tyrosinase Rabbit mAb
Host Species	Rabbit
Clonality	Monoclonal
Isotype	Rabbit IgG
Purification	Affinity-chromatography
Applications	WB IHC ICC/IF
Species Reactivity	Human
Specificity	Tyrosinase Antibody detects endogenous levels of total Tyrosinase
Immunogen Description	A synthesized peptide derived from human Tyrosinase
Other Names	ATN; CMM8; LB24 AB; SHEP3; SK29 AB; Tumor rejection antigen AB; TYR;
Accession No.	Uniprot:P14679
Uniprot	P14679
Formulation	Rabbit IgG in phosphate buffered saline , pH 7.4, 150mM NaCl, 0.02% sodium azide and 50% glycerol.
Storage	Store at +4°C short term. Store at -20°C long term. Avoid freeze / thaw cycle.

Application Details

WB 1:500~1:2000 IHC 1:50~1:200 ICC/IF 1:50~1:200

Images



Western blot analysis of Tyrosinase expression in human melanoma lysate.

Product Description

Tyrosinase, found in the membrane of melanosomes, is a key enzyme in the biosynthesis of melanin pigments. It is a melanocyte differentiation antigen and is expressed in normal melanocytes and malignant melanomas. Tyrosinase is implicated to be an antigen target for melanoma vaccines.

Background

Tyrosinase, found in the membrane of melanosomes, is a key enzyme in the biosynthesis of melanin pigments. It is a melanocyte differentiation antigen and is expressed in normal melanocytes and malignant melanomas. Tyrosinase is implicated to be an antigen target for melanoma vaccines.

Note: This product is for in vitro research use only