

Hepcidin Rabbit mAb

Catalog No: #59394

Package Size: #59394-1 50ul #59394-2 100ul

Orders: order@signalwayantibody.com

Support: tech@signalwayantibody.com

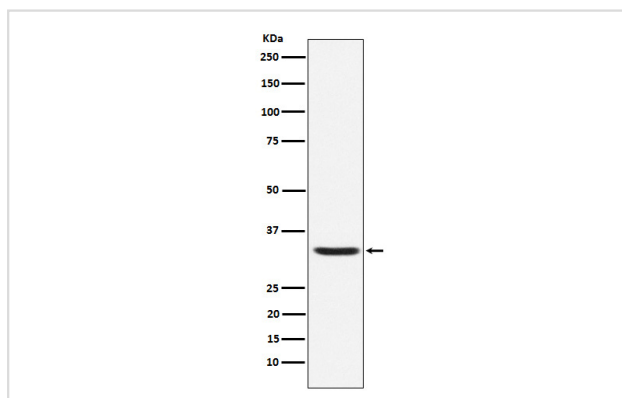
Description

Product Name	Hepcidin Rabbit mAb
Host Species	Rabbit
Clonality	Monoclonal
Isotype	Rabbit IgG
Purification	Affinity-chromatography
Applications	WB
Species Reactivity	Human Rat
Specificity	Hepcidin Antibody detects endogenous levels of total Hepcidin
Immunogen Description	A synthesized peptide derived from human Hepcidin
Other Names	Hepcidin; Liver-expressed antimicrobial peptide 1; LEAP-1; Putative liver tumor regressor; PLTR; Hepcidin-25; Hepc25; Hepcidin-20; Hepc20; HAMP; HEPC; LEAP1;
Accession No.	Uniprot:P81172
Uniprot	P81172
Formulation	Rabbit IgG in phosphate buffered saline , pH 7.4, 150mM NaCl, 0.02% sodium azide and 50% glycerol.
Storage	Store at +4°C short term. Store at -20°C long term. Avoid freeze / thaw cycle.

Application Details

WB 1:500~1:2000

Images



Western blot analysis of Hepcidin expression in Human Hepcidin Full-length Recombinant Protein (GFP Tagged).

Product Description

Hepcidin, also known as HAMP, HEPC, LEAP1 or HFE2B, is an 84 amino acid secreted protein that regulates iron-related signaling events. Acts by promoting endocytosis and degradation of ferroportin, leading to the retention of iron in iron-exporting cells and decreased flow of iron into plasma.

Background

Hepcidin, also known as HAMP, HEPC, LEAP1 or HFE2B, is an 84 amino acid secreted protein that regulates iron-related signaling events. Acts by promoting endocytosis and degradation of ferroportin, leading to the retention of iron in iron-exporting cells and decreased flow of iron into plasma.

Note: This product is for in vitro research use only