

## ADAM10 Rabbit mAb

Catalog No: #59398

Package Size: #59398-1 50ul #59398-2 100ul

Orders: order@signalwayantibody.com

Support: tech@signalwayantibody.com

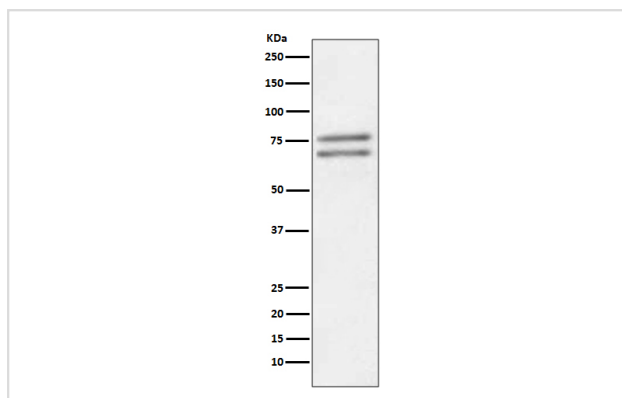
## Description

Product Name	ADAM10 Rabbit mAb
Host Species	Rabbit
Clonality	Monoclonal
Isotype	Rabbit IgG
Purification	Affinity-chromatography
Applications	WB IP
Species Reactivity	Human Mouse Rat
Specificity	ADAM10 Antibody detects endogenous levels of total ADAM10
Immunogen Description	A synthesized peptide derived from human ADAM10
Other Names	CDw156; CD156c; ADAM10; KUZ; MADM;
Accession No.	Uniprot:O14672
Uniprot	O14672
Formulation	Rabbit IgG in phosphate buffered saline , pH 7.4, 150mM NaCl, 0.02% sodium azide and 50% glycerol.
Storage	Store at +4°C short term. Store at -20°C long term. Avoid freeze / thaw cycle.

## Application Details

WB 1:500~1:2000 IP 1:50

## Images



Western blot analysis of ADAM10 expression in Jurkat cell lysate.

## Product Description

The ADAM10 prodomain acts as a chaperone that stabilizes mature ADAM protein folding, and prevents target-protein shedding through inhibition of ADAM10 proteinase activity. Mature ADAM10 is the major  $\alpha$ -secretase responsible for cleavage of Notch, APP, cadherins, and prion protein. The ADAM10 protein cleaves receptor tyrosine kinases and their associated ligands and displays a wide range of regulatory functions across related signaling pathways.

## Background

---

The ADAM10 prodomain acts as a chaperone that stabilizes mature ADAM protein folding, and prevents target-protein shedding through inhibition of ADAM10 proteinase activity. Mature ADAM10 is the major  $\alpha$ -secretase responsible for cleavage of Notch, APP, cadherins, and prion protein. The ADAM10 protein cleaves receptor tyrosine kinases and their associated ligands and displays a wide range of regulatory functions across related signaling pathways.

---

Note: This product is for in vitro research use only