

CD40L Rabbit mAb

Catalog No: #59400

Package Size: #59400-1 50ul #59400-2 100ul

Orders: order@signalwayantibody.com

Support: tech@signalwayantibody.com

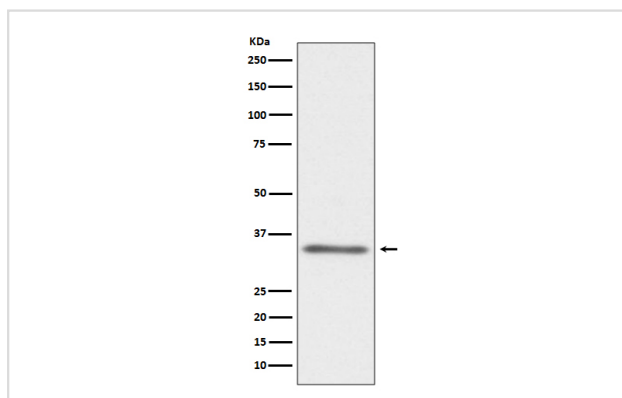
Description

Product Name	CD40L Rabbit mAb
Host Species	Rabbit
Clonality	Monoclonal
Isotype	Rabbit IgG
Purification	Affinity-chromatography
Applications	WB
Species Reactivity	Human Mouse
Specificity	CD40L Antibody detects endogenous levels of total CD40L
Immunogen Description	A synthesized peptide derived from human CD40L
Other Names	CD40 ligand; CD40-L; T-cell antigen Gp39; TNF-related activation protein; TRAP; CD154; CD40 ligand, membrane form; CD40 ligand, soluble form; CD40LG; CD40L; TNFSF5; TRAP;
Accession No.	Uniprot:P29965
Uniprot	P29965
Formulation	Rabbit IgG in phosphate buffered saline , pH 7.4, 150mM NaCl, 0.02% sodium azide and 50% glycerol.
Storage	Store at +4°C short term. Store at -20°C long term. Avoid freeze / thaw cycle.

Application Details

WB 1:500~1:2000

Images



Western blot analysis of CD40L expression in MOLT-4 cell lysate.

Product Description

Mediates B-cell proliferation in the absence of co-stimulus as well as IgE production in the presence of IL-4. Involved in immunoglobulin class switching.

Background

Mediates B-cell proliferation in the absence of co-stimulus as well as IgE production in the presence of IL-4. Involved in immunoglobulin class switching.

Note: This product is for in vitro research use only