

## LY6A Rabbit mAb

Catalog No: #59401

Package Size: #59401-1 50ul #59401-2 100ul

Orders: order@signalwayantibody.com

Support: tech@signalwayantibody.com

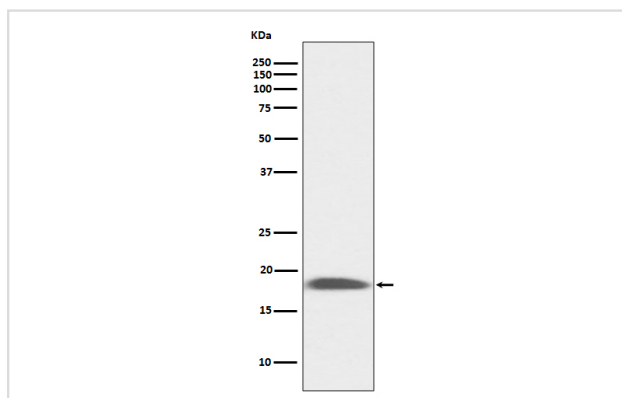
## Description

Product Name	LY6A Rabbit mAb
Host Species	Rabbit
Clonality	Monoclonal
Isotype	Rabbit IgG
Purification	Affinity-chromatography
Applications	WB IHC
Species Reactivity	Mouse
Specificity	LY6A Antibody detects endogenous levels of total LY6A
Immunogen Description	A synthesized peptide derived from human LY6A
Other Names	Ly-6A.2/Ly-6E.1; Ly6a; Ly6al; Lymphocyte antigen 6A-2/6E-1; Lymphocyte antigen Ly 6A.2/Ly 6E.1; SCA-1; Stem cell antigen 1; T cell activating protein; TAP;
Accession No.	Uniprot:P05533
Uniprot	P05533
Formulation	Rabbit IgG in phosphate buffered saline , pH 7.4, 150mM NaCl, 0.02% sodium azide and 50% glycerol.
Storage	Store at +4°C short term. Store at -20°C long term. Avoid freeze / thaw cycle.

## Application Details

WB 1:500~1:2000 IHC 1:50~1:200

## Images



Western blot analysis of LY6A expression in mouse kidney lysate.

## Product Description

T-cell activation.

## Background

---

T-cell activation.

---

Note: This product is for in vitro research use only