

CD18 Rabbit mAb

Catalog No: #59403

Package Size: #59403-1 50ul #59403-2 100ul

Orders: order@signalwayantibody.com

Support: tech@signalwayantibody.com

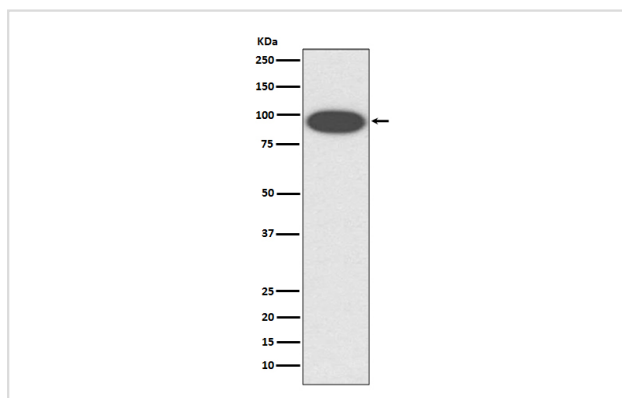
Description

Product Name	CD18 Rabbit mAb
Host Species	Rabbit
Clonality	Monoclonal
Isotype	Rabbit IgG
Purification	Affinity-chromatography
Applications	WB IP
Species Reactivity	Human
Specificity	CD18 Antibody detects endogenous levels of total CD18
Immunogen Description	A synthesized peptide derived from human CD18
Other Names	Integrin beta-2; Cell surface adhesion glycoproteins LFA-1/CR3/p150,95 subunit bet; Complement receptor C3 subunit beta; CD18; ITGB2; CD18; MFI7;
Accession No.	Uniprot:P05107
Uniprot	P05107
Formulation	Rabbit IgG in phosphate buffered saline , pH 7.4, 150mM NaCl, 0.02% sodium azide and 50% glycerol.
Storage	Store at +4°C short term. Store at -20°C long term. Avoid freeze / thaw cycle.

Application Details

WB 1:500~1:2000 IP 1:50

Images



Western blot analysis of CD18 expression in K562 cell lysate.

Product Description

Integrin alpha-X/beta-2 recognizes the sequence G-P-R in fibrinogen alpha-chain. Integrin alpha-M/beta-2 recognizes P1 and P2 peptides of fibrinogen gamma chain. Integrin alpha-M/beta-2 is also a receptor for factor X. Integrin alpha-D/beta-2 is a receptor for ICAM3 and VCAM1.

Background

Integrin alpha-X/beta-2 recognizes the sequence G-P-R in fibrinogen alpha-chain. Integrin alpha-M/beta-2 recognizes P1 and P2 peptides of fibrinogen gamma chain. Integrin alpha-M/beta-2 is also a receptor for factor X. Integrin alpha-D/beta-2 is a receptor for ICAM3 and VCAM1.

Note: This product is for in vitro research use only