

ERp57 Rabbit mAb

Catalog No: #59410

Package Size: #59410-1 50ul #59410-2 100ul

Orders: order@signalwayantibody.comSupport: tech@signalwayantibody.com

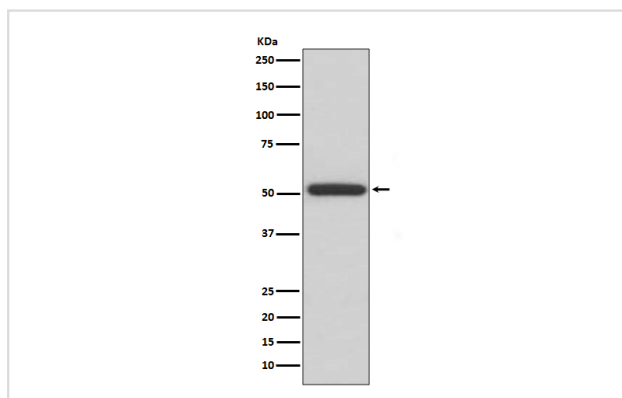
Description

Product Name	ERp57 Rabbit mAb
Host Species	Rabbit
Clonality	Monoclonal
Isotype	Rabbit IgG
Purification	Affinity-chromatography
Applications	WB IHC IP
Species Reactivity	Human
Specificity	ERp57 Antibody detects endogenous levels of total ERp57
Immunogen Description	A synthesized peptide derived from human ERp57
Other Names	ERp57; ERp60; ERp61; Glucose Regulated Protein 58 Kd; HsT17083; p58; PDIA3; Phospholipase C alpha; PI PLC;
Accession No.	Uniprot:P30101
Uniprot	P30101
Formulation	Rabbit IgG in phosphate buffered saline , pH 7.4, 150mM NaCl, 0.02% sodium azide and 50% glycerol.
Storage	Store at +4°C short term. Store at -20°C long term. Avoid freeze / thaw cycle.

Application Details

WB 1:500~1:2000 IHC 1:50~1:200 IP 1:50

Images



Western blot analysis of ERp57 expression in HepG2 cell lysate.

Product Description

Detected in the flagellum and head region of spermatozoa (at protein level).

Background

Detected in the flagellum and head region of spermatozoa (at protein level).

Note: This product is for in vitro research use only