

XRCC1 Rabbit mAb

Catalog No: #59413

Package Size: #59413-1 50ul #59413-2 100ul

Orders: order@signalwayantibody.comSupport: tech@signalwayantibody.com

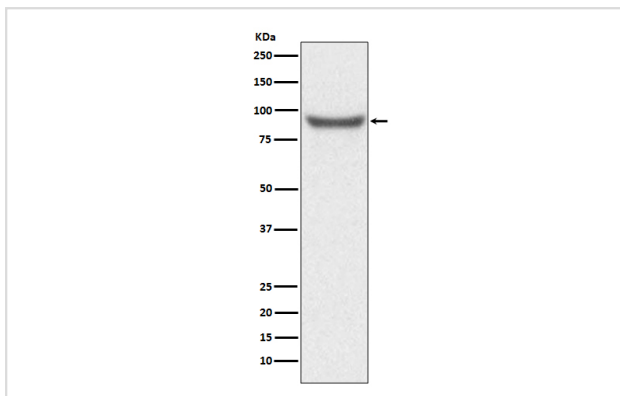
Description

Product Name	XRCC1 Rabbit mAb
Host Species	Rabbit
Clonality	Monoclonal
Isotype	Rabbit IgG
Purification	Affinity-chromatography
Applications	WB IHC ICC/IF
Species Reactivity	Human Mouse Rat
Specificity	XRCC1 Antibody detects endogenous levels of total XRCC1
Immunogen Description	A synthesized peptide derived from human XRCC1
Other Names	DNA repair protein XRCC1; RCC; X ray repair complementing defective repair in chinese hamster; XRCC 1;
Accession No.	Uniprot:P18887
Uniprot	P18887
Formulation	Rabbit IgG in phosphate buffered saline , pH 7.4, 150mM NaCl, 0.02% sodium azide and 50% glycerol.
Storage	Store at +4°C short term. Store at -20°C long term. Avoid freeze / thaw cycle.

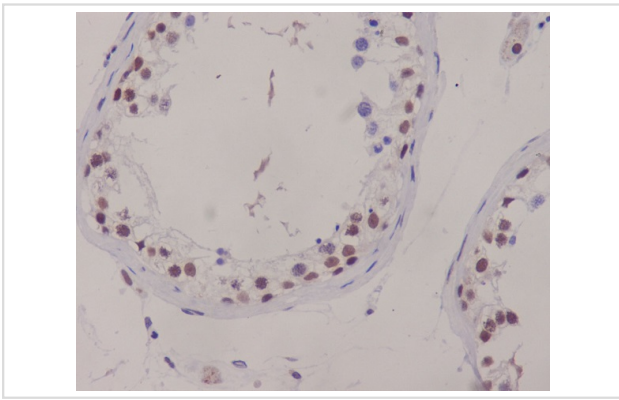
Application Details

WB 1:500~1:2000 IHC 1:50~1:200 ICC/IF 1:50~1:200

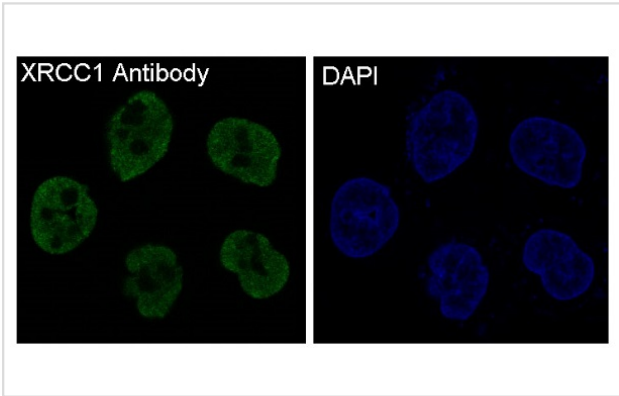
Images



Western blot analysis of XRCC1 expression in HeLa cell lysate.



Immunohistochemical analysis of paraffin-embedded human testis, using XRCC1 Antibody.



Immunofluorescent analysis of HeLa cells, using XRCC1 Antibody .

Product Description

XRCC1 acts as a scaffold protein to coordinate DNA abasic site repair through interaction with several other repair proteins. At least eight XRCC1 protein partners have been identified, including the polynucleotide kinase PNK, DNA ligase III, poly (ADP-ribose) polymerase, and PCNA.

Background

XRCC1 acts as a scaffold protein to coordinate DNA abasic site repair through interaction with several other repair proteins. At least eight XRCC1 protein partners have been identified, including the polynucleotide kinase PNK, DNA ligase III, poly (ADP-ribose) polymerase, and PCNA.

Note: This product is for in vitro research use only