

## MIF Rabbit mAb

Catalog No: #59417

Package Size: #59417-1 50ul #59417-2 100ul

Orders: order@signalwayantibody.com

Support: tech@signalwayantibody.com

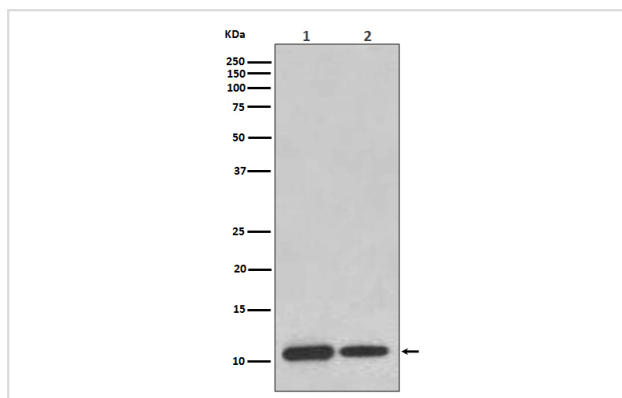
## Description

Product Name	MIF Rabbit mAb
Host Species	Rabbit
Clonality	Monoclonal
Isotype	Rabbit IgG
Purification	Affinity-chromatography
Applications	WB IP FC
Species Reactivity	Human Mouse Rat
Specificity	MIF Antibody detects endogenous levels of total MIF
Immunogen Description	A synthesized peptide derived from human MIF
Other Names	GIF; GLIF; Glycosylation inhibiting factor; L-dopachrome isomerase; MIF protein; MMIF;
Accession No.	Uniprot:P14174
Uniprot	P14174
Formulation	Rabbit IgG in phosphate buffered saline , pH 7.4, 150mM NaCl, 0.02% sodium azide and 50% glycerol.
Storage	Store at +4°C short term. Store at -20°C long term. Avoid freeze / thaw cycle.

## Application Details

WB 1:500~1:2000 IP 1:50 FC 1:50

## Images



Western blot analysis of MIF expression in (1) THP-1 cell lysate; (2) Mouse brain lysate.

## Product Description

MIF promotes the systemic inflammatory response by counter-regulating glucocorticoid-mediated inhibition of immune-cell activation and proinflammatory cytokine production. MIF may mediate tissue destruction through the induction of proteinases.

## Background

---

MIF promotes the systemic inflammatory response by counter-regulating glucocorticoid-mediated inhibition of immune-cell activation and proinflammatory cytokine production. MIF may mediate tissue destruction through the induction of proteinases.

---

Note: This product is for in vitro research use only