

## RPE65 Rabbit mAb

Catalog No: #59418

Package Size: #59418-1 50ul #59418-2 100ul

Orders: order@signalwayantibody.com

Support: tech@signalwayantibody.com

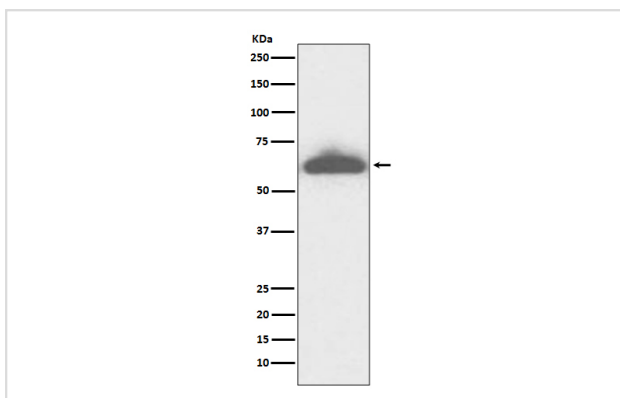
## Description

Product Name	RPE65 Rabbit mAb
Host Species	Rabbit
Clonality	Monoclonal
Isotype	Rabbit IgG
Purification	Affinity-chromatography
Applications	WB IP
Species Reactivity	Human Mouse Rat
Specificity	RPE65 Antibody detects endogenous levels of total RPE65
Immunogen Description	A synthesized peptide derived from human RPE65
Other Names	LCA2; mRPE65; p63; rd12; Retinal pigment epithelium specific 61 kDa protein; RP20; RPE65; sRPE65;
Accession No.	Uniprot:Q16518
Uniprot	Q16518
Formulation	Rabbit IgG in phosphate buffered saline , pH 7.4, 150mM NaCl, 0.02% sodium azide and 50% glycerol.
Storage	Store at +4°C short term. Store at -20°C long term. Avoid freeze / thaw cycle.

## Application Details

WB 1:500~1:2000 IP 1:50

## Images



Western blot analysis of RPE65 expression in mouse eyeball lysate.

## Product Description

Plays important roles in the production of 11-cis retinal and in visual pigment regeneration. The soluble form binds vitamin A (all-trans-retinol), making it available for LRAT processing to all-trans-retinyl ester. The membrane form, palmitoylated by LRAT, binds all-trans-retinyl esters, making them available for IMH (isomerohydrolase) processing to all-cis-retinol.

## Background

---

Plays important roles in the production of 11-cis retinal and in visual pigment regeneration. The soluble form binds vitamin A (all-trans-retinol), making it available for LRAT processing to all-trans-retinyl ester. The membrane form, palmitoylated by LRAT, binds all-trans-retinyl esters, making them available for IMH (isomerohydrolase) processing to all-cis-retinol.

---

Note: This product is for in vitro research use only