

CaMKII delta Rabbit mAb

Catalog No: #59423

Package Size: #59423-1 50ul #59423-2 100ul

Orders: order@signalwayantibody.com

Support: tech@signalwayantibody.com

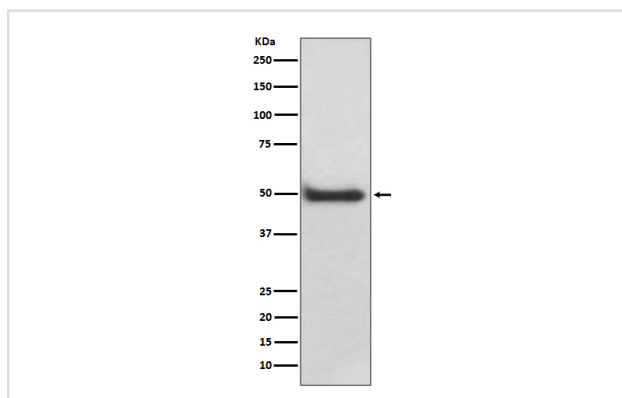
Description

Product Name	CaMKII delta Rabbit mAb
Host Species	Rabbit
Clonality	Monoclonal
Isotype	Rabbit IgG
Purification	Affinity-chromatography
Applications	WB IHC
Species Reactivity	Human Mouse Rat
Specificity	CaMKII delta Antibody detects endogenous levels of total CaMKII delta
Immunogen Description	A synthesized peptide derived from human CaMKII delta
Other Names	CAM kinase 2 delta; CAM kinase II delta; CaM kinase II delta subunit; CaM kinase II subunit delta; CAMK 2d; CaMK-II delta subunit; CAMK2D; CAMKI;
Accession No.	Uniprot:Q13557
Uniprot	Q13557
Formulation	Rabbit IgG in phosphate buffered saline , pH 7.4, 150mM NaCl, 0.02% sodium azide and 50% glycerol.
Storage	Store at +4°C short term. Store at -20°C long term. Avoid freeze / thaw cycle.

Application Details

WB 1:500~1:2000 IHC 1:50~1:200

Images



Western blot analysis of CaMKII delta expression in A431 cell lysate.

Product Description

CaM-kinase II (CAMK2) is a prominent kinase in the central nervous system that may function in long-term potentiation and neurotransmitter release.

Background

CaM-kinase II (CAMK2) is a prominent kinase in the central nervous system that may function in long-term potentiation and neurotransmitter release.

Note: This product is for in vitro research use only