

GATA1 Rabbit mAb

Catalog No: #59429

Package Size: #59429-1 50ul #59429-2 100ul

Orders: order@signalwayantibody.com

Support: tech@signalwayantibody.com

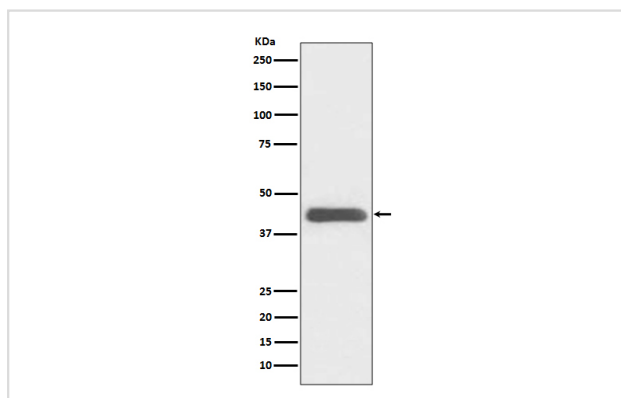
Description

Product Name	GATA1 Rabbit mAb
Host Species	Rabbit
Clonality	Monoclonal
Isotype	Rabbit IgG
Purification	Affinity-chromatography
Applications	WB IHC ICC/IF IP CHIP
Species Reactivity	Human
Specificity	GATA1 Antibody detects endogenous levels of total GATA1
Immunogen Description	A synthesized peptide derived from human GATA1
Other Names	Erythroid transcription factor; Eryf1; GATA-binding factor 1; GATA-1; GF-1; NF-E1 DNA-binding protein; GATA1; ERYF1; GF1;
Accession No.	Uniprot:P15976
Uniprot	P15976
Formulation	Rabbit IgG in phosphate buffered saline , pH 7.4, 150mM NaCl, 0.02% sodium azide and 50% glycerol.
Storage	Store at +4°C short term. Store at -20°C long term. Avoid freeze / thaw cycle.

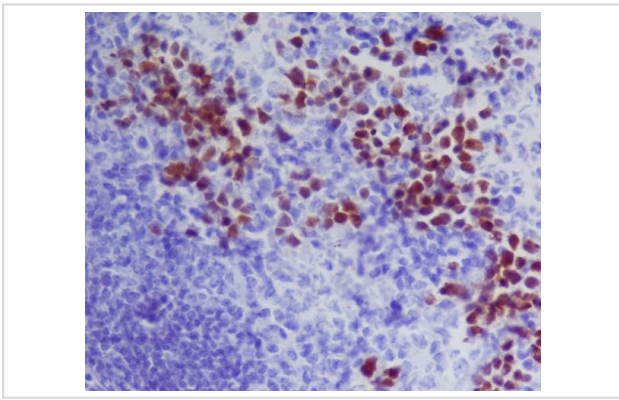
Application Details

WB 1:500~1:2000 IHC 1:50~1:200 ICC/IF 1:50~1:200 IP 1:50 ChIP

Images



Western blot analysis of GATA1 expression in K562 cell lysate.



Immunohistochemical analysis of paraffin-embedded mouse spleen, using GATA1 Antibody.

Product Description

GATA-1 is the founding member of the GATA family and is required for erythroid and megakaryocytic cell development. Mutations in GATA-1 have been linked to many human diseases, including acute megakaryoblastic leukemia in Down syndrome children (DS-AMKL), X-linked thrombocytopenia, and gray platelet syndrome.

Background

GATA-1 is the founding member of the GATA family and is required for erythroid and megakaryocytic cell development. Mutations in GATA-1 have been linked to many human diseases, including acute megakaryoblastic leukemia in Down syndrome children (DS-AMKL), X-linked thrombocytopenia, and gray platelet syndrome.

Note: This product is for in vitro research use only